

# NEW Sizes & Sets

## COLORS INDICATES

Yellow Shading Indicates  
NEW - NOW IN STOCK

Blue Shading Indicates  
NEW - COMING SOON

Gray Shading Indicates  
Obsolete once inventory is depleted

New Product Release June, 2023



### Drills

Heavy Duty Taper Length  
Styles: 2513



### Parabolic

Styles: 2065, 2065-TN



### Parabolic Tanged

Styles: 2565, 2565-TN



### Wide Land Parabolic Q-Cobalt™

Styles: 2075, 2075-TN, 2075-TC, 2075-TA



### Taps

General Purpose Tap - Inch

Styles: 1001, 1001TN, 1002, 1002SO,  
1002TN, 1002TC, 1003, 1003TN, 1004



General Purpose Tap - Inch

Styles: 1011, 1011SO, 1011TN,  
1011TC, 1012, 1012TN



Chicago-Latrobe®

### Drills

Silver & Deming - 1/2" Reduced  
Shank

Styles: 190 and 190F



Styles: 190C and 190C-TN



GREENFIELD  
THREADING

### Taps

General Purpose Straight Flute - Inch  
Style: HTGP



General Purpose Spiral Point - Inch  
Style: SPGP



CLE-LINE

### Drills

Reduced Shank Silver & Deming  
Styles: 1813, 1892, 1877



Silver & Deming - 1/4" Reduced Shank  
Styles: 1814





# NEW SIZES & SETS

## COLORS INDICATES

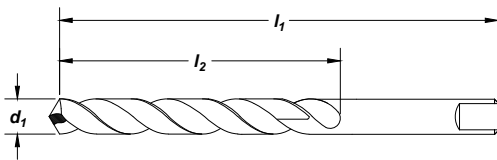
Yellow Shading indicates  
NEW - NOW IN STOCK

Blue Shading indicates  
NEW - COMING SOON

## CLEVELAND



Heavy Duty Taper Length  
Style: **2513**



**Feature:**

Highly heat resistant substrate for tough to machine materials.

drill diameter d <sub>1</sub>	decimal	order number	overall length	flute length	straw
Inch	Number	equiv.	l <sub>1</sub> (in)	l <sub>2</sub> (in)	<b>2513</b>
1/16		.0625	3.000	1.750	C83000
5/64		.0781	3.750	2.000	C83001
3/32		.0938	4.250	2.250	C83003
	40	.0980	4.625	2.500	C83026
	38	.1015	4.625	2.500	C83025
	37	.1040	4.625	2.500	C83024
	36	.1065	4.625	2.500	C83023
7/64	33	.1094	4.625	2.500	C83002
		.1130	5.125	2.750	C83022
1/8		.1250	5.125	2.750	C14873
	30	.1285	5.375	3.000	C83021
	29	.1360	5.375	3.000	C83020
9/64		.1406	5.375	3.000	C14882
	27	.1440	5.375	3.000	C83019
	26	.1470	5.375	3.000	C83018
5/32		.1562	5.375	3.000	C14893
	21	.1590	5.750	3.375	C83017
	20	.1610	5.750	3.375	C83016
11/64		.1719	5.750	3.375	C83004
	16	.1770	5.750	3.375	C83015
	15	.1800	5.750	3.375	C83014
3/16		.1875	5.750	3.375	C14915
	7	.2010	6.000	3.625	C83013
13/64		.2031	6.000	3.625	C83005

drill diameter d <sub>1</sub>	decimal	order number	overall length	flute length	straw
Inch	Number	equiv.	l <sub>1</sub> (in)	l <sub>2</sub> (in)	<b>2513</b>
	3	.2130	6.000	3.625	C83012
7/32		.2188	6.000	3.625	C14935
	1	.2280	6.125	3.750	C83011
15/64		.2344	6.125	3.750	C83006
1/4		.2500	6.125	3.750	C14954
17/64		.2656	6.250	3.875	C83007
9/32		.2812	6.250	3.875	C14973
19/64		.2969	6.375	4.000	C83008
5/16		.3125	6.375	4.000	C14984
21/64		.3281	6.500	4.125	C83009
11/32		.3438	6.500	4.125	C14999
23/64		.3594	6.750	4.250	C15007
3/8		.3750	6.750	4.250	C15014
25/64		.3906	7.000	4.375	C83010
13/32		.4062	7.000	4.375	C15028
27/64		.4219	7.250	4.625	C15031
7/16		.4375	7.250	4.625	C15034
29/64		.4531	7.500	4.750	C15037
15/32		.4688	7.500	4.750	C15039
31/64		.4844	7.750	4.750	C15042
1/2		.5000	7.750	4.750	C15044

**COLORS INDICATES**

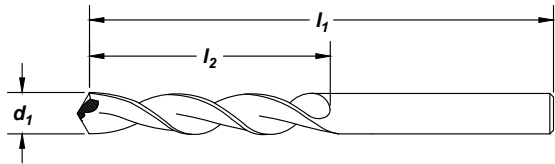
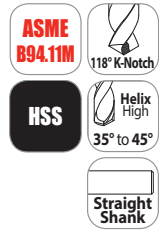
**NEW - NOW IN STOCK**

**NEW - COMING SOON**

**New Product Release June, 2023**



**Parabolic**  
**Styles: 2065, 2065-TN**



**Note**  
 Adjust the parameters as follows: double the given feed rate.

**Feature:**

Excels in deep hole drilling without pecking in softer, free machining materials. Drill up to 10x diameter without pecking.

drill diameter		wire	decimal equivalent	overall length		order number	
fraction	d <sub>1</sub>			l <sub>1</sub> (in)	l <sub>2</sub> (in)	2065 Bright	2065-TN TiN
1/16		52	.0635	1.875	.875	C16029	C03705
		51	.0670	2.000	1.000	C16218	-
		50	.0700	2.000	1.000	C16217	C03708
		49	.0730	2.000	1.000	C16216	-
		48	.0760	2.000	1.000	C16215	-
5/64		47	.0785	2.000	1.000	C16030	C03711
		46	.0810	2.125	1.125	C16213	-
		45	.0820	2.125	1.125	C16212	-
		44	.0860	2.125	1.125	C16211	-
		43	.0890	2.250	1.250	C16210	-
3/32		42	.0935	2.250	1.250	C16209	-
		41	.0960	2.375	1.375	C16208	-
		40	.0980	2.375	1.375	C16207	C03720
		39	.0995	2.375	1.375	C16206	-
		38	.1015	2.500	1.438	C16205	C03722
7/64		37	.1040	2.500	1.438	C16204	-
		36	.1065	2.500	1.438	C16203	C03724
		35	.1100	2.625	1.500	C16032	C03725
		34	.1110	2.625	1.500	C16202	-
		33	.1130	2.625	1.500	C16201	-
1/8		32	.1160	2.750	1.625	C16200	C03728
		31	.1200	2.750	1.625	C16199	-
		30	.1285	2.750	1.625	C16198	C03730
		29	.1360	2.875	1.750	C16197	C03732
		28	.1405	2.875	1.750	C16196	C03733
9/64		27	.1406	2.875	1.750	C16195	-
		26	.1440	3.000	1.875	C16034	-
		25	.1470	3.000	1.875	C16194	-
		24	.1495	3.000	1.875	C16193	-
		23	.1520	3.125	2.000	C16192	C03738
			.1540	3.125	2.000	C16191	-
						C16190	-

continued on next page



**COLORS INDICATES**

New Product Release June, 2023

**NEW - NOW IN STOCK**

**NEW - COMING SOON**



**Parabolic**  
**Styles: 2065, 2065-TN**

fraction	drill diameter		decimal equivalent	overall length l <sub>1</sub> (in)	flute length l <sub>2</sub> (in)	order number	
	d <sub>1</sub>	wire				2065 Bright	2065-TN TiN
5/32			.1562	3.125	2.000	C16035	C03741
		22	.1570	3.125	2.000	C16189	C03742
		21	.1590	3.500	2.313	C16188	C03743
		20	.1610	3.250	2.125	C16187	-
		19	.1660	3.250	2.125	C16186	C03745
11/64		18	.1695	3.250	2.125	C16185	-
			.1719	3.250	2.125	C16036	C03747
		17	.1730	3.375	2.188	C16184	-
		16	.1770	3.375	2.188	C16183	-
		15	.1800	3.375	2.188	C16182	C03750
		14	.1820	3.375	2.188	C16181	C03751
		13	.1850	3.500	2.313	C16180	C03752
3/16			.1875	3.500	2.313	C16037	C03753
		12	.1890	3.500	2.313	C16179	-
		11	.1910	3.500	2.313	C16178	-
		10	.1935	3.625	2.438	C16177	C03756
		9	.1960	3.625	2.438	C16176	-
		8	.1990	3.625	2.438	C16175	C03758
		7	.2010	3.625	2.438	C16174	-
13/64			.2031	3.625	2.438	C16038	C03760
		6	.2040	3.750	2.500	C16173	C03761
		5	.2055	3.750	2.500	C16172	C03762
		4	.2090	3.750	2.500	C16171	-
		3	.2130	3.750	2.500	C16170	C03764
7/32			.2188	3.750	2.500	C16039	C03765
		2	.2210	3.875	2.625	C16169	-
15/64		1	.2280	3.875	2.625	C16168	-
			.2344	3.875	2.625	C16040	-
1/4	E		.2500	4.000	2.750	C16041	C03773
17/64			.2656	4.125	2.875	C16042	C03776
9/32			.2812	4.250	2.938	C16043	C03781
19/64			.2969	4.375	3.063	C16044	C03784
5/16			.3125	4.500	3.188	C16045	C03786
21/64			.3281	4.625	3.313	C16046	-
11/32			.3438	4.750	3.438	C16047	-
23/64			.3594	4.875	3.500	C16048	-
3/8			.3750	5.000	3.625	C16049	-
25/64			.3906	5.125	3.750	C16050	-
13/32			.4062	5.250	3.875	C16051	C03801
27/64			.4219	5.375	3.938	C16052	-
7/16			.4375	5.500	4.063	C16053	C03804
29/64			.4531	5.625	4.188	C16054	-
15/32			.4688	5.750	4.313	C16055	C03806
31/64			.4844	5.875	4.375	C16056	C03807
1/2			.5000	6.000	4.500	C16057	-



**COLORS INDICATES**

**NEW - NOW IN STOCK**

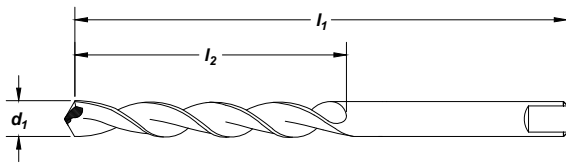
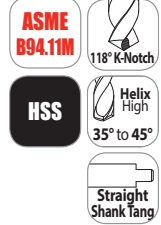
**NEW - COMING SOON**

**New Product Release June, 2023**



**Parabolic Tanged**

**Styles: 2565, 2565-TN**



**Note**  
Adjust the parameters as follows: double the given feed rate.

**Feature:**

Excels in deep hole drilling without pecking in softer, free machining materials. Drill up to 10x diameter without pecking. Taper length for extended reach. Standard with automotive tang.

drill diameter		decimal equiv.	overall length l <sub>1</sub> (in)	flute length l <sub>2</sub> (in)	order number	
fraction	d <sub>1</sub> wire/let				2565 bright	2565-TN TiN
1/16		.0625	3.000	1.750	C16058	C05105
5/64		.0781	3.750	2.000	C16059	C05111
3/32		.0938	4.250	2.250	C16060	C05118
7/64		.1094	4.625	2.500	C16061	C05125
1/8		.1250	5.125	2.750	C16062	C05131
	30	.1285	5.375	3.000	C16249	-
	29	.1360	5.375	3.000	C16248	-
9/64		.1406	5.375	3.000	C16063	C05135
	26	.1470	5.375	3.000	C16245	-
	25	.1495	5.375	3.000	C16244	-
5/32		.1562	5.375	3.000	C16064	C05141
	21	.1590	5.750	3.375	C16240	-
	20	.1610	5.750	3.375	C16239	-
11/64		.1719	5.750	3.375	C16065	C05147
3/16		.1875	5.750	3.375	C16066	C05153
	9	.1960	6.000	3.625	C16228	-
13/64		.2031	6.000	3.625	C16067	C05160
7/32		.2188	6.000	3.625	C16068	C05165
15/64		.2344	6.125	3.750	C16069	C05169
1/4	E	.2500	6.125	3.750	C16070	C05173
17/64		.2656	6.250	3.875	C16071	C05176
9/32		.2812	6.250	3.875	C16072	C05181
19/64		.2969	6.375	4.000	C16073	C05184
5/16		.3125	6.375	4.000	C16074	C05185
21/64		.3281	6.500	4.125	C16075	C05187
11/32		.3438	6.500	4.125	C16076	C05190
23/64		.3594	6.750	4.250	C16077	C05193
3/8		.3750	6.750	4.250	C16078	C05195
25/64		.3906	7.000	4.375	C16079	C05198
13/32		.4062	7.000	4.375	C16080	C05201
27/64		.4219	7.250	4.625	C16081	C05203
7/16		.4375	7.250	4.625	C16082	C05204
29/64		.4531	7.500	4.750	C16083	C05205
15/32		.4688	7.500	4.750	C16084	C05206
31/64		.4844	7.750	4.750	C16085	C05207
1/2		.5000	7.750	4.750	C16086	C05208
33/64		.5156	8.000	6.000	C13000	C13019



**COLORS INDICATES**

**NEW - NOW IN STOCK**

**NEW - COMING SOON**

**New Product Release June, 2023**



**Parabolic Tanged (Continued)**

**Styles: 2565, 2565-TN**

drill diameter		decimal equiv.	overall length l <sub>1</sub> (in)	flute length l <sub>2</sub> (in)	order number	
fraction	d <sub>1</sub> wire/let				2565 bright	2565-TN TiN
17/32		.5312	8.000	6.000	C13001	C13020
35/64		.5469	8.250	6.250	C13002	C13022
9/16		.5625	8.250	6.250	C13004	C13023
37/64		.5781	8.750	6.500	C13005	C13024
19/32		.5938	8.750	6.500	C13006	C13026
5/8		.6250	8.750	6.500	C13008	C13028

**COLORS INDICATES**

**NEW - NOW IN STOCK**

**NEW - COMING SOON**

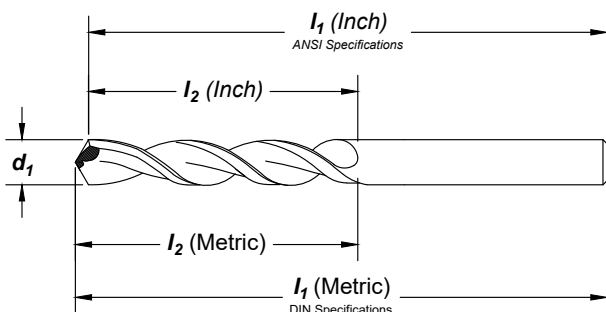
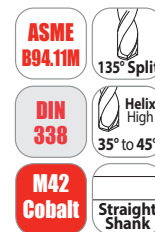
**New Product Release June, 2023**

Obsolete once inventory is depleted



**Wide Land Parabolic Q-Cobalt™**

**Styles: 2075, 2075-TN, 2075-TC, 2075-TA**



**Feature:**

Effective deep hole drilling in a wide array of materials. Available coating for extended tool life and productivity. Up to 7x diameter drilling without pecking.

drill diameter		overall length		flute length		order number				
fraction	d <sub>1</sub> wire/let	decimal equivalent	in	mm	in	mm	2075 straw oxide	2075-TN TiN	2075-TC TiCN	2075-TA TiAlN
		*1.50	.0591	40.00		18.00	C16584	C16696	-	C11360
		*1.55	.0610	43.00		20.00	C15540	-	-	-
1/16		.0625	1.875	43.00	0.875	20.00	C16555	C16667	C16942	C16972
		1.60	.0630	43.00		20.00	C15541	C13029	-	C11361
	52	.0635	1.875	43.00	0.875	20.00	C16554	C16666	C13175	C11452
		1.65	.0650	43.00		20.00	C15542	-	-	-
	51	.0670	2.000	46.00	1.000	22.00	C16553	C16665	C13099	C11451
		1.75	.0689	46.00		22.00	C15543	-	-	-
	50	.0700	2.000	46.00	1.000	22.00	C16552	C16664	C13098	C11450
		1.80	.0709	46.00		22.00	C15544	-	-	-
	49	.0730	2.000	46.00	1.000	22.00	C16551	C16663	C13097	C11449
		1.90	.0748	46.00		22.00	C15545	-	-	-
	48	.0760	2.000	49.00	1.000	24.00	C16550	C16661	C13096	C11448
5/64		.0781	2.000	49.00	1.000	24.00	C16556	C16668	C16943	C16973
	47	.0785	2.000	49.00	1.000	24.00	C16549	C16660	C13095	C11447
		2.00	.0787	49.00		24.00	C16585	C16697	-	C11362
		2.05	.0807	49.00		24.00	C15546	-	-	-
	46	.0810	2.125	53.00	1.125	27.00	C16548	C16659	C13094	C11446
	45	.0820	2.125	53.00	1.125	27.00	C16547	C16658	C13093	C11445
		2.10	.0827	53.00		24.00	C15547	-	-	-
		2.15	.0846	53.00		27.00	C15548	-	-	-
	44	.0860	2.125	53.00	1.125	27.00	C16546	C16657	C13091	C11444
		2.20	.0866	53.00		27.00	C15549	-	-	-
		2.25	.0886	53.00		27.00	C15550	-	-	-
	43	.0890	2.250	53.00	1.250	27.00	C16545	C16656	C16944	C16974
		2.30	.0906	53.00		27.00	C15551	C16455	-	-
		2.35	.0925	53.00		27.00	C15552	-	-	-
	42	.0935	2.250	57.00	1.250	30.00	C16544	C16655	C13090	C11442
3/32		.0938	2.250	57.15	1.250	31.75	C16557	C16669	C16945	C16975
		2.40	.0945	57.00		30.00	C15553	-	-	-
	41	.0960	2.375	57.00	1.375	30.00	C16543	C16654	C16946	C16976
	40	.0980	2.375	57.00	1.375	30.00	C16542	C16652	C16947	C16977
		2.50	.0984	57.00		30.00	C16586	C16698	-	C11363
	39	.0995	2.375	57.00	1.375	30.00	C16541	C16651	C16948	C16978
	38	.1015	2.500	57.00	1.438	30.00	C16540	C16650	C13089	C11438
		2.60	.1024	57.00		30.00	C15554	-	-	-
	37	.1040	2.500	57.00	1.438	30.00	C16539	C16649	C13088	C11437
	36	.1065	2.500	57.00	1.438	30.00	C16538	C16648	C16949	C16979
7/64		.1094	2.625	57.00	1.500	30.00	C16558	C16670	C16950	C16980

continued on next page





**COLORS INDICATES**

**NEW - NOW IN STOCK**

**NEW - COMING SOON**

**New Product Release June, 2023**

Obsolete once inventory is depleted



**Wide Land Parabolic Q-Cobalt™ (Continued)**

**Styles: 2075, 2075-TN, 2075-TC, 2075-TA**

drill diameter			overall length		flute length		order number				
fraction	wire/let	d <sub>1</sub>	decimal equivalent	l <sub>1</sub>		l <sub>2</sub>		2075	2075-TN	2075-TC	2075-TA
		mm		in	mm	in	mm	mm	straw oxide	TiN	TiCN
		35	.1100	2.625		1.500		C16537	C16647	C13087	C11435
			2.80	.1102		61.00	33.00	C15555	-	-	C11364
		34	.1110	2.625		1.500		C16536	C16646	C13086	C11434
		33	.1130	2.625		1.500		C16535	C16645	C13085	C11433
			2.90	.1142		61.00	33.00	C15556	C13030	-	C11365
		32	.1160	2.750		1.625		C16534	C16644	C13084	C11432
			3.00	.1181		61.00	33.00	C16587	C16699	-	C11366
		31	.1200	2.750		1.625		C16533	C16643	C13083	C11431
			3.10	.1220		65.00	36.00	C15557	C16456	-	-
1/8			.1250	2.750		1.625		C16559	C16671	C16951	C16981
			3.20	.1260		65.00	36.00	C15558	C16457	-	-
		30	.1285	2.750		1.625		C16532	C16642	C16952	C16982
			3.30	.1299		65.00	36.00	C15559	C13031	-	C11367
			3.40	.1339		70.00	39.00	C15560	-	-	-
		29	.1360	2.875		1.750		C16531	C16641	C16953	C16983
			3.50	.1378		70.00	39.00	C16588	C16700	-	C11368
		28	.1405	2.875		1.750		C16530	C16640	C13082	C11428
9/64			.1406	2.875		1.750		C16560	C16672	C13042	C11400
		27	.1440	3.000		1.875		C16529	C16639	C13081	C11427
			3.70	.1457		70.00	39.00	C15561	-	-	C11369
		26	.1470	3.000		1.875		C16528	C16638	C13080	C11426
		25	.1495	3.000		1.875		C16527	C16637	C13079	C11425
		24	.1520	3.125		2.000		C16526	C16636	C13078	C11424
		23	.1540	3.125		2.000		C16525	C16635	C13076	C11423
5/32			.1562	3.125		2.000		C16561	C16673	C16954	C16984
		22	.1570	3.125		2.000		C16524	C16634	C13075	C11422
			4.00	.1575		75.00	43.00	C16589	C16701	-	C11370
		21	.1590	3.500		2.313		C16523	C16633	C16955	C16985
		20	.1610	3.250		2.125		C16522	C16632	C13074	C11420
			4.10	.1614		75.00	43.00	C15562	-	-	-
			4.20	.1654		75.00	43.00	C15563	C13033	-	C11371
		19	.1660	3.250		2.125		C16521	C16631	C13073	C11419
		18	.1695	3.250		2.125		C16520	C16630	C13072	C11418
11/64			.1719	3.250		2.125		C16562	C16674	C13043	C11404
		17	.1730	3.375		2.188		C16519	C16629	C13071	C11417
			4.40	.1732		80.00	47.00	C15581	-	-	-
		16	.1770	3.375		2.188		C16518	C16628	C13070	C11416
			4.50	.1772		80.00	47.00	C16590	C16702	-	C11373
		15	.1800	3.375		2.188		C16517	C16626	C13069	C11415
		14	.1820	3.375		2.188		C16516	C16625	C13067	C11414
		13	.1850	3.500		2.313		C16515	C16624	C13066	C11413
3/16			.1875	3.500		2.313		C16563	C16675	C16956	C16986
			4.80	.1890		86.00	52.00	C15564	-	-	-
		12	.1890	3.500		2.313		C16514	C16623	C13065	C11412
		11	.1910	3.500		2.313		C16513	C16622	C13063	C11411
		10	.1935	3.625		2.438		C16512	C16621	C13062	C11410
		9	.1960	3.625		2.438		C16511	C16620	C13061	C11409
			5.00	.1969		86.00	52.00	C16591	C16703	-	C11374
		8	.1990	3.625		2.438		C16510	C16619	C13060	C11408
			5.10	.2008		86.00	52.00	C15565	-	-	-
		7	.2010	3.625		2.438		C16509	C16618	C16957	C16987
13/64			.2031	3.625		2.438		C16564	C16676	C16958	C16988
		6	.2040	3.750		2.500		C16508	C16617	C16959	C16989
			5.20	.2047		86.00	52.00	C16592	C16704	-	-

continued on next page





**COLORS INDICATES**

**NEW - NOW IN STOCK**

**NEW - COMING SOON**

**New Product Release June, 2023**

**Obsolete once inventory is depleted**



**Wide Land Parabolic Q-Cobalt™ (Continued)**

**Styles: 2075, 2075-TN, 2075-TC, 2075-TA**

drill diameter		overall length		flute length		order number				
fraction	d <sub>1</sub> wire/let mm	decimal equivalent	in l <sub>1</sub> mm	in l <sub>2</sub> mm	in	mm	2075 straw oxide	2075-TN TiN	2075-TC TiCN	2075-TA TiAlN
	5	.2055	3.750	2.500			C16507	C16616	C13059	C11405
	4	.2090	3.750	2.500			C16506	C16615	C16960	C16990
	3	.2130	3.750	2.500			C16505	C16614	C13058	C11403
7/32	5.50	.2165	3.750	93.00	2.500	57.00	C16593	C16705	-	C11375
		C16565					C16677	C16961	C16991	
	5.60	.2205	3.750	93.00	2.500	57.00	C16594	C16706	-	-
		C16504					C16613	C13057	C11402	
2	5.70	.2244	3.875	93.00	2.625	57.00	C15566	-	-	-
1	5.80	.2280	3.875	93.00	2.625	57.00	C16503	C16612	C13056	C11401
15/64	6.00	.2283	3.875	93.00	2.625	57.00	C15582	-	-	-
		C15650					-	C16430	-	
	6.00	.2340	3.875	93.00	2.625	57.00	C16566	C16678	C16962	C16992
		C16595					C16707	-	C11377	
B		.2344	4.000		2.750		C15651	-	C16431	-
C		.2380	4.000		2.750		C15652	-	C16432	-
D		.2420	4.000		2.750		C15653	-	C16433	-
1/4	E	.2460	4.000		2.750		C16567	C16679	C16963	C16993
	6.40	.2500	4.125	101.00	2.875	63.00	C15567	-	-	-
		C16596					C16708	-	C11378	
F	6.50	.2520	4.125	101.00	2.875	63.00	C15654	-	C16434	-
		C15568					-	-	-	
G	6.60	.2570	4.125	101.00	2.875	63.00	C15655	-	C16435	-
		C15569					-	-	-	
17/64	6.70	.2598	4.125	101.00	2.875	63.00	C16568	C16680	C16964	C16994
		C15656					-	C16436	-	
	6.80	.2610	4.125	109.00	2.875	69.00	C16597	C16709	-	C11379
		C15657					-	C16437	-	
	7.00	.2660	4.125	109.00	2.875	69.00	C16598	C16710	C16965	C16995
		C15658					-	C16438	-	
9/32	7.20	.2677	4.250	109.00	2.938	69.00	C15659	-	C16439	-
		C16569					C16681	C16966	C16996	
	7.20	.2720	4.250	109.00	2.938	69.00	C15570	-	-	-
		C15660					-	C16440	-	
M	7.50	.2756	4.375	111.13	3.063	77.79	C15661	-	C16441	-
		C16599					C16711	-	C11380	
19/64	7.50	.2770	4.375	109.00	3.063	69.00	C16570	C16682	C13044	C13205
		C15662					-	C16442	-	
5/16	8.00	.2810	4.500	117.00	3.188	75.00	C16571	C16683	C16967	C16997
		C16600					C16712	-	C11381	
	8.10	.2812	4.500	117.00	3.188	75.00	C15663	-	C16443	-
		C15572					-	-	-	
	8.20	.2835	4.625	117.00	3.313	75.00	C16601	C16713	-	-
		C15664					-	C16444	-	
21/64	8.20	.2900	4.625	117.00	3.313	75.00	C16572	C16684	C13045	C13206
		C15665					-	C16445	-	
	8.50	.2950	4.750	125.00	3.438	81.00	C16602	C16714	-	C11382
		C16603					C16715	-	-	
R	8.60	.2953	4.750	125.00	3.438	81.00	C15666	-	C16446	-
		C15573					C13035	-	C13215	
11/32	8.70	.2969	4.750	125.00	3.438	81.00	C16573	C16685	C16968	C16998
		C15667					-	C16447	-	
	9.00	.3020	4.875	125.00	3.500	81.00	C16604	C16716	-	C11383
		C15668					-	C16448	-	
23/64	T	.3125	4.875		3.500		C16574	C16686	C13047	C13207
		.3150	4.875		3.500					

continued on next page



**COLORS INDICATES**

**NEW - NOW IN STOCK**

**NEW - COMING SOON**

**New Product Release June, 2023**

**Obsolete once inventory is depleted**



**Wide Land Parabolic Q-Cobalt™ (Continued)**

**Styles: 2075, 2075-TN, 2075-TC, 2075-TA**

drill diameter			overall length		flute length		order number				
fraction	d <sub>1</sub>		decimal equivalent	l <sub>1</sub>		l <sub>2</sub>		2075	2075-TN	2075-TC	2075-TA
	wire/let	mm		in	mm	in	mm	straw oxide	TiN	TiCN	TiAlN
	U		.3680	5.000		3.625		C15669	-	C16449	-
3/8		9.50	.3740		125.00			C16605	C16717	-	-
			.3750	5.000		3.625		C16575	C16687	C16969	C16999
	V		.3770	5.000		3.625		C15670	-	C16450	-
	W		.3860	5.125		3.750		C15671	-	C16451	-
25/64			.3906	5.125		3.750		C16576	C16688	C13048	C13208
		10.00	.3937		133.00			C16606	C16718	-	C11384
	X		.3970	5.125		3.750		C15672	-	C16452	-
		10.20	.4016		133.00			C15574	C13036	-	C13216
	Y		.4040	5.250		3.875		C15673	-	C16453	-
13/32			.4062	5.250		3.875		C16577	C16689	C13049	C13209
			.4130	5.250		3.875		C15674	-	C16454	-
	Z		.4134		133.00			C16607	C16719	-	-
27/64			.4219	5.375		3.938		C16578	C16690	C13051	C13210
		10.80	.4252		142.00			C15575	C13037	-	C13217
		11.00	.4331		142.00			C16608	C16720	-	C11385
7/16			.4375	5.500		4.063		C16579	C16691	C16970	C17000
		11.20	.4409		142.00			C15576	-	-	-
		11.50	.4528		142.00			C16609	C16721	-	-
29/64			.4531	5.625		4.188		C16580	C16692	C13052	C13212
15/32			.4688	5.750		4.313		C16581	C16693	C13054	C13213
		12.00	.4724		151.00			C16610	C16722	-	C11386
		12.25	.4823		151.00			C15577	C13038	-	C13250
31/64			.4844	5.875		4.375		C16582	C16694	C13055	C13214
		12.50	.4921		151.00			C16611	C16723	-	C13251
1/2			.5000	6.000		4.500		C16583	C16695	C16971	C17001
		13.00	.5118		151.00			C15583	C13040	-	C11387

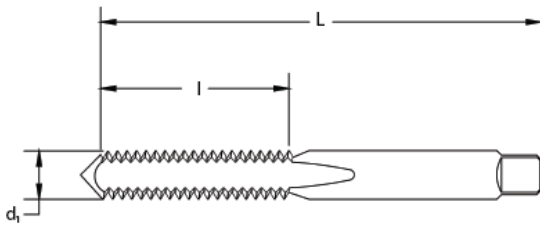
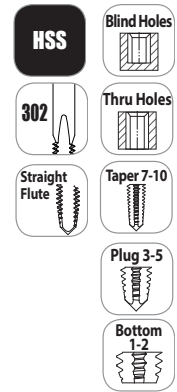




General Purpose Tap - Inch

Styles: 1001, 1001TN, 1002, 1002SO, 1002TN, 1002TC, 1003, 1003TN, 1004

Effective March 2023: These tap are being converted from 302A to 302 design.



**Note**  
Set # 1004 consists of one each taper, plug, and bottoming chamfers - Bright.

**Feature:**

New neck down style. Three different chamfers for maintenance and repair versatility.

tap size pitch	thrd form d1	dec. equiv.	# of flutes	H- limit	overall length L (in)	thread length l (in)	order number									
							Taper		Plug				Bottoming		Set	
							1001 Bright	1001TN TiN	1002 Bright	1002SO Bl. oxide	1002TN TiN	1002TC TiCN	1003 Bright	1003TN TiN	1004 Bright	1004 TiN
0-80	UNF	.0600	2	H1	1.625	.313	C54025	—	C54026	—	—	—	C54027	—	—	—
0-80	UNF	.0600	2	H2	1.625	.313	C83360	—	C54029	—	C55156	—	C54030	C83931	C83982	—
1-64	UNC	.0730	2	H1	1.688	.375	C54055	—	C54056	—	C83842	—	C54057	C83932	C83983	—
1-64	UNC	.0730	2	H2	1.688	.375	C83361	—	C83817	—	—	—	C83899	—	—	—
1-72	UNF	.0730	2	H1	1.688	.375	C54060	—	C54061	—	C83843	—	C54062	C83933	C83984	—
1-72	UNF	.0730	2	H2	1.688	.375	C83362	—	C83818	—	—	—	C83900	—	—	—
2-56	UNC	.0860	2	H2	1.750	.375	C83363	—	C54087	—	—	—	C54088	—	—	—
2-56	UNC	.0860	3	H1	1.750	.375	C54083	—	C54084	—	—	—	C54085	—	—	—
2-56	UNC	.0860	3	H2	1.750	.375	C54089	C83383	C54090	—	C55158	C56050	C54091	C83934	C54092	C84221
2-64	UNF	.0860	3	H2	1.750	.438	C54093	—	C54094	—	—	—	C54095	—	C83985	—
3-48	UNC	.0990	3	H2	1.813	.500	C54115	C83384	C54116	—	C83844	—	C54117	C83935	C54118	C84222
3-56	UNF	.0990	3	H2	1.813	.500	C54120	C83385	C54121	—	C83845	—	C54122	C83936	C54123	C84223
4-40	UNC	.1120	2	H1	1.875	.563	—	—	C54142	—	—	—	—	—	—	—
4-40	UNC	.1120	2	H2	1.875	.563	—	—	C54147	—	—	—	C54148	—	—	—
4-40	UNC	.1120	3	H2	1.875	.563	C54149	C83386	C54150	—	C55160	C56052	C54151	C83937	C54152	C84224
4-48	UNF	.1120	3	H2	1.875	.563	C54153	C83387	C54154	—	C83846	—	C54155	C83938	C54156	C84225
5-40	UNC	.1250	2	H2	1.938	.625	—	—	C54186	—	—	—	C54187	—	—	—
5-40	UNC	.1250	3	H2	1.938	.625	C54188	C83388	C54189	—	C55162	—	C54190	C83939	C54191	C84226
5-44	UNF	.1250	3	H2	1.938	.625	C54192	C83389	C54193	—	C83847	—	C54194	C83940	C54195	C84227
6-32	UNC	.1380	2	H2	2.000	.688	C83364	—	C54215	—	C83848	—	C54216	C83941	C83986	—
6-32	UNC	.1380	2	H3	2.000	.688	C83365	C83390	C54221	—	C83849	C83889	C54222	C83942	C83987	C84228
6-32	UNC	.1380	3	H2	2.000	.688	C54217	C83391	C54218	—	C55164	—	C54219	C83943	C54220	C84229
6-32	UNC	.1380	3	H3	2.000	.688	C54223	C83392	C54224	C56000	C55100	C56054	C54225	C55200	C54226	C84230
6-40	UNF	.1380	3	H2	2.000	.688	C54232	C83393	C54233	—	C55102	—	C54234	C55202	C54235	C84231
8-32	UNC	.1640	2	H1	2.125	.750	—	—	C54256	—	—	—	C83901	—	—	—
8-32	UNC	.1640	2	H2	2.125	.750	C83366	C83394	C54264	—	C83850	—	C54265	—	C83988	—
8-32	UNC	.1640	2	H3	2.125	.750	C83367	C83395	C54273	—	C83851	C83890	C54274	C83944	C83989	C84232
8-32	UNC	.1640	3	H2	2.125	.750	C83368	—	C54267	—	—	—	C54268	—	—	—
8-32	UNC	.1640	3	H3	2.125	.750	C83500	—	C54275	—	C83852	—	C54276	C83945	C83990	—
8-32	UNC	.1640	4	H2	2.125	.750	C54269	C83396	C54270	—	C55166	—	C54271	—	C54272	—
8-32	UNC	.1640	4	H3	2.125	.750	C54277	C54307	C54278	C56002	C55104	C56056	C54279	C55204	C54280	C84233
8-36	UNF	.1640	4	H2	2.125	.750	C54289	C83397	C54290	—	C55106	—	C54291	C83946	C54292	C84234

continued on next page

**COLORS INDICATES**

New Product Release June, 2023

**NEW - NOW IN STOCK**

**NEW - COMING SOON**



**General Purpose Tap - Inch (Continued)**

Styles: **1001, 1001TN, 1002, 1002SO, 1002TN, 1002TC, 1003, 1003TN, 1004**

tap size pitch	thrd form	dec. equiv.	# of flutes	H- limit	overall length L (in)	thread length I (in)	order number									
							Taper		Plug				Bottoming		Set	
							1001 Bright	1001TN TiN	1002 Bright	1002SO Bl. oxide	1002TN TiN	1002TC TiCN	1003 Bright	1003TN TiN	1004 Bright	1004 TiN
10-24	UNC	.1900	2	H2	2.375	.875	—	—	C54318	—	—	—	C83902	—	—	—
10-24	UNC	.1900	2	H3	2.375	.875	C83369	—	C54325	—	C83853	—	C54326	C83947	C83991	—
10-24	UNC	.1900	3	H3	2.375	.875	C83370	—	C54327	—	C83854	—	C54328	C83948	C83992	—
10-24	UNC	.1900	4	H2	2.375	.875	C54321	—	C54322	—	—	—	C54323	—	C54324	—
10-24	UNC	.1900	4	H3	2.375	.875	C54329	C83398	C54330	C56004	C55108	C56058	C54331	C55208	C54332	C84235
10-32	UNF	.1900	2	H2	2.375	.875	C83371	—	C54343	—	C83855	—	C83903	—	—	—
10-32	UNF	.1900	2	H3	2.375	.875	C83372	C83399	C54352	—	C83856	C83891	C54353	C83949	C83993	C84236
10-32	UNF	.1900	3	H2	2.375	.875	—	—	C83819	—	C83857	—	C83904	—	—	—
10-32	UNF	.1900	3	H3	2.375	.875	—	—	C54354	—	C55170	—	C54355	—	—	—
10-32	UNF	.1900	4	H2	2.375	.875	C54348	C83400	C54349	—	C83858	—	C54350	C83950	C54351	C84237
10-32	UNF	.1900	4	H3	2.375	.875	C54356	C54309	C54357	C56006	C55110	C56060	C54358	C55210	C54359	C84238
12-24	UNC	.2160	4	H3	2.375	.938	C54385	C83480	C54386	—	C55112	—	C54387	C55212	C54388	C84239
12-28	UNF	.2160	4	H3	2.375	.938	C54389	—	C54390	—	C55114	—	C54391	C55214	C54392	—
1/4-20	UNC	.2500	2	H3	2.500	1.000	C83373	C83481	C54456	—	C83859	C83892	C54457	C83951	C83994	C84241
1/4-20	UNC	.2500	3	H2	2.500	1.000	—	—	C54451	—	—	—	C83905	—	—	—
1/4-20	UNC	.2500	3	H3	2.500	1.000	C83374	C83482	C54458	—	C83860	C83893	C54459	C83952	C83995	C84242
1/4-20	UNC	.2500	3	H5	2.500	1.000	—	—	C54463	—	—	—	C83906	—	—	—
1/4-20	UNC	.2500	4	H1	2.500	1.000	C54443	—	C54444	—	—	—	C54445	—	C54447	—
1/4-20	UNC	.2500	4	H2	2.500	1.000	C54448	—	C54449	—	—	—	C54450	—	C54452	—
1/4-20	UNC	.2500	4	H3	2.500	1.000	C54453	C83483	C54454	C56008	C55116	C56062	C54455	C55216	C54460	C84243
1/4-20	UNC	.2500	4	H5	2.500	1.000	C83375	—	C54461	—	C83861	—	C54462	C83953	C83996	—
1/4-20	UNC	.2500	4	H11	2.500	1.000	—	—	C54464	—	—	—	—	—	—	—
1/4-28	UNF	.2500	2	H3	2.500	1.000	—	—	C54472	—	—	—	C54473	—	—	—
1/4-28	UNF	.2500	3	H3	2.500	1.000	—	—	C54474	—	C83862	—	C54475	—	—	—
1/4-28	UNF	.2500	4	H2	2.500	1.000	—	—	C54467	—	—	—	C54468	C83954	—	—
1/4-28	UNF	.2500	4	H3	2.500	1.000	C54469	C83484	C54470	C56010	C55118	C56064	C54471	C55218	C54476	C84244
1/4-28	UNF	.2500	4	H4	2.500	1.000	—	—	C83820	—	—	—	C83907	—	—	—
5/16-18	UNC	.3125	2	H3	2.719	1.125	C83376	—	C54507	—	C83863	—	C54508	C83955	C83997	—
5/16-18	UNC	.3125	3	H3	2.719	1.125	C83377	—	C54509	—	—	—	C54510	C83956	—	—
5/16-18	UNC	.3125	3	H5	2.719	1.125	—	—	C83821	—	C83864	—	C83908	—	—	—
5/16-18	UNC	.3125	4	H2	2.719	1.125	—	—	C54502	—	—	—	C54503	—	—	—
5/16-18	UNC	.3125	4	H3	2.719	1.125	C54504	C83485	C54505	C56012	C55120	C56066	C54506	C55220	C54511	C84245
5/16-18	UNC	.3125	4	H5	2.719	1.125	—	—	C54512	—	—	—	C54513	—	—	—
5/16-18	UNC	.3125	4	H11	2.719	1.125	—	—	C54514	—	—	—	—	—	—	—
5/16-24	UNF	.3125	3	H3	2.719	1.125	—	—	C54521	—	—	—	C54522	—	—	—
5/16-24	UNF	.3125	4	H2	2.719	1.125	C83378	—	C83822	—	—	—	C83909	—	—	—
5/16-24	UNF	.3125	4	H3	2.719	1.125	C54518	C83486	C54519	—	C55122	—	C54520	C55222	C54523	C84246
5/16-24	UNF	.3125	4	H4	2.719	1.125	—	—	C54524	—	—	—	C54525	—	—	—
3/8-16	UNC	.3750	3	H3	2.938	1.250	C83379	—	C54585	—	C55180	—	C54586	C83957	C83998	—
3/8-16	UNC	.3750	3	H5	2.938	1.250	—	—	C83823	—	—	—	C83910	—	—	—
3/8-16	UNC	.3750	4	H2	2.938	1.250	—	—	C54580	—	C83865	—	C54581	—	—	—
3/8-16	UNC	.3750	4	H3	2.938	1.250	C54582	C83487	C54583	C56014	C55124	C56070	C54584	C55224	C54587	C84247
3/8-16	UNC	.3750	4	H5	2.938	1.250	—	—	C54588	—	C83866	—	C54589	C83958	—	—
3/8-24	UNF	.3750	3	H3	2.938	1.250	—	—	C54598	—	—	—	C54599	—	—	—
3/8-24	UNF	.3750	4	H2	2.938	1.250	—	—	C83824	—	—	—	C83911	—	—	—
3/8-24	UNF	.3750	4	H3	2.938	1.250	C54595	C83488	C54596	C56016	C55126	C83894	C54597	C55226	C54600	C84248
3/8-24	UNF	.3750	4	H5	2.938	1.250	—	—	C83825	—	—	—	C83912	—	—	—
7/16-14	UNC	.4375	3	H3	3.156	1.438	—	—	C83826	—	—	—	C83913	—	—	—

continued on next page



**COLORS INDICATES**

New Product Release June, 2023

**NEW - NOW IN STOCK**

**NEW - COMING SOON**



**General Purpose Tap - Inch (Continued)**

Styles: **1001, 1001TN, 1002, 1002SO, 1002TN, 1002TC, 1003, 1003TN, 1004**

tap size pitch	thrd form d <sub>1</sub>	dec. equiv.	# of flutes	H- limit	overall length L (in)	thread length I (in)	order number									
							Taper		Plug			Bottoming		Set		
							1001 Bright	1001TN TiN	1002 Bright	1002SO Bl. oxide	1002TN TiN	1002TC TiCN	1003 Bright	1003TN TiN	1004 Bright	1004 TiN
7/16-14	UNC	.4375	4	H2	3.156	1.438	—	—	C83827	—	—	—	C83914	—	—	—
7/16-14	UNC	.4375	4	H3	3.156	1.438	C54652	C83489	C54653	—	C55128	C83895	C54654	C55228	C54656	C84249
7/16-14	UNC	.4375	4	H5	3.156	1.438	—	—	C54658	—	C83867	—	C54659	C83959	—	—
7/16-20	UNF	.4375	3	H3	3.156	1.438	—	—	C83828	—	—	—	C83915	—	—	—
7/16-20	UNF	.4375	4	H2	3.156	1.438	—	—	C83829	—	—	—	C83916	—	—	—
7/16-20	UNF	.4375	4	H3	3.156	1.438	C54661	C83490	C54662	—	C55130	—	C54663	C55230	C54665	C84250
7/16-20	UNF	.4375	4	H5	3.156	1.438	—	—	C54666	—	C83868	—	C54667	C83960	—	—
1/2-13	UNC	.5000	3	H3	3.375	1.656	C83380	—	C54729	—	C83869	—	C54730	C83961	C83999	—
1/2-13	UNC	.5000	4	H1	3.375	1.656	—	—	C54724	—	—	—	—	—	—	—
1/2-13	UNC	.5000	4	H2	3.375	1.656	C83381	—	C83830	—	—	—	C83917	—	—	—
1/2-13	UNC	.5000	4	H3	3.375	1.656	C54726	C83491	C54727	C56020	C55132	C56076	C54728	C55232	C54731	C84251
1/2-13	UNC	.5000	4	H5	3.375	1.656	—	—	C54732	—	—	—	C54733	C83962	—	—
1/2-20	UNF	.5000	3	H3	3.375	1.656	—	—	C54740	—	—	—	—	—	—	—
1/2-20	UNF	.5000	4	H3	3.375	1.656	C54737	C83492	C54738	—	C55134	—	C54739	C55234	C54741	C84252
1/2-20	UNF	.5000	4	H5	3.375	1.656	—	—	C54742	—	—	—	—	—	—	—
9/16-12	UNC	.5625	4	H3	3.594	1.656	C54759	C83493	C54760	—	C55136	—	C54761	C55236	C54762	C84253
9/16-12	UNC	.5625	4	H5	3.594	1.656	—	—	C83831	—	—	—	C83918	—	—	—
9/16-18	UNF	.5625	4	H3	3.594	1.656	C54765	—	C54766	—	C55138	—	C54767	C55238	C54768	—
9/16-18	UNF	.5625	4	H5	3.594	1.656	—	—	C83832	—	—	—	C83919	—	—	—
5/8-11	UNC	.6250	4	H2	3.813	1.813	—	—	C83833	—	—	—	C83920	—	—	—
5/8-11	UNC	.6250	4	H3	3.813	1.813	C54779	C83494	C54780	C56028	C55140	C83896	C54781	C55240	C54782	C84254
5/8-11	UNC	.6250	4	H5	3.813	1.813	—	—	C54783	—	—	—	C54784	C83963	—	—
5/8-18	UNF	.6250	4	H3	3.813	1.813	C54787	C83495	C54788	—	C55142	—	C54789	C55242	C54790	C84255
5/8-18	UNF	.6250	4	H5	3.813	1.813	—	—	C83834	—	—	—	C83921	—	—	—
11/16-11	UNS	.6875	4	H3	4.031	1.813	C54813	—	C54814	—	—	—	C54815	—	C54816	—
11/16-16	UNS	.6875	4	H3	4.031	1.813	C54817	—	C54818	—	—	—	C54819	—	C54820	—
3/4-10	UNC	.7500	4	H2	4.250	2.000	—	—	C83835	—	—	—	C83922	—	—	—
3/4-10	UNC	.7500	4	H3	4.250	2.000	C54838	C83496	C54839	—	C55144	C83897	C54840	C55244	C54841	C84256
3/4-10	UNC	.7500	4	H5	4.250	2.000	—	—	C83836	—	—	—	C83923	—	—	—
3/4-16	UNF	.7500	4	H2	4.250	2.000	—	—	C83837	—	—	—	C83924	—	—	—
3/4-16	UNF	.7500	4	H3	4.250	2.000	C54846	C83497	C54847	—	C55146	—	C54848	C55246	C54849	C84257
3/4-16	UNF	.7500	4	H5	4.250	2.000	—	—	C83838	—	—	—	C83925	—	—	—
7/8-9	UNC	.8750	4	H4	4.688	2.219	C54884	C83498	C54885	—	C55148	—	C54886	C55248	C54887	C84258
7/8-9	UNC	.8750	4	H6	4.688	2.219	—	—	C83839	—	—	—	C83926	—	—	—
7/8-14	UNF	.8750	4	H4	4.688	2.219	C54890	C83499	C54891	—	C55150	C83898	C54892	C55250	C54893	C84259
7/8-14	UNF	.8750	4	H6	4.688	2.219	—	—	C83840	—	—	—	C83927	—	—	—
1-8	UNC	1.0000	4	H4	5.125	2.500	C54923	C83800	C54924	—	C55152	—	C54925	C55252	C54926	C84260
1-12	UNF	1.0000	4	H4	5.125	2.500	C54928	—	C54929	—	C55154	—	C54930	—	—	—
1-14	UNS	1.0000	4	H4	5.125	2.500	C54933	—	C54934	—	—	—	C54935	—	C54936	—
1-1/8-7	UNC	1.1250	4	H4	5.438	2.563	C54965	—	C54966	—	—	—	C54967	—	—	—
1-1/8-12	UNF	1.1250	4	H4	5.438	2.563	C54971	—	C54972	—	—	—	C54973	—	—	—
1-1/4-7	UNC	1.2500	4	H4	5.750	2.563	C54994	—	C54995	—	—	—	C54996	—	—	—
1-1/4-12	UNF	1.2500	6	H4	5.750	2.563	C55000	—	C55001	—	—	—	C55002	—	—	—
1-3/8-6	UNC	1.3750	4	H4	5.750	2.563	—	—	C55028	—	—	—	—	—	—	—
1-3/8-12	UNF	1.3750	6	H4	5.750	2.563	—	—	C55031	—	—	—	C55032	—	—	—
1-1/2-6	UNC	1.5000	4	H4	6.375	3.000	C55057	—	C55058	—	—	—	C55059	—	—	—
1-1/2-12	UNF	1.5000	6	H4	6.375	3.000	C55063	—	C55064	—	—	—	C55065	—	—	—



**COLORS INDICATES**

**NEW - NOW IN STOCK**

**NEW - COMING SOON**

**New Product Release June, 2023**



**General Purpose Tap - Metric**

**Styles: 1001, 1001TN, 1002, 1002TN, 1003, 1003TN, 1004**

tap size pitch d <sub>1</sub>	dec. equiv.	# of flutes	D limit	overall length L (in)	thread length I (in)	order number							
						Taper		Plug		Bottoming		Set	
						1001 Bright	1001TN TiN	1002 Bright	1002TN TiN	1003 Bright	1003TN TiN	1004 Bright	1004 TiN
M1.6 x 0.35	.0630	2	D3	1.625	.313	—	—	C54044	—	C54045	—	—	—
M2 x 0.4	.0787	3	D3	1.750	.438	C54073	C83801	C54074	C83870	C54075	C83964	C84210	C84261
M2.5 x 0.45	.0984	3	D3	1.813	.500	C54131	C83802	C54132	C83871	C54133	C83965	C84211	C84262
M3 x 0.5	.1181	3	D3	1.938	.625	C54164	C83803	C54165	C83872	C54166	C83966	C54167	C84263
M3.5 x 0.6	.1378	3	D4	2.000	.688	C54203	C83804	C54204	C83873	C54205	C83967	C84212	C84264
M4 x 0.7	.1575	4	D4	2.125	.750	C54246	C83805	C54247	C83874	C54248	C83968	C54249	C84265
M4.5 x 0.75	.1771	4	D4	2.375	.875	C54303	—	C54304	C83875	C54305	—	C84213	—
M5 x 0.8	.1968	4	D4	2.375	.875	C54374	C83806	C54375	C83876	C54376	C83969	C54377	C84266
M6 x 1	.2362	4	D5	2.500	1.000	C54413	C83807	C54414	C83877	C54415	C83970	C54416	C84267
M7 x 1	.2756	4	D5	2.719	1.125	C54489	—	C54490	—	C54491	—	—	—
M8 x 1	.3150	4	D5	2.719	1.125	C54536	C83808	C54537	C83878	C54538	C83971	C84214	C84268
M8 x 1.25	.3150	4	D5	2.719	1.125	C54546	C83809	C54547	C83879	C54548	C83972	C54539	—
M10 x 1.25	.3937	4	D5	2.938	1.250	C54617	C83810	C54618	C83880	C54619	C83973	C84215	C84269
M10 x 1.5	.3937	4	D6	2.938	1.250	C54624	C83811	C54625	C83881	C54626	C83974	C54627	C84270
M12 x 1.25	.4724	4	D5	3.375	1.656	C54675	C83812	C54676	C83882	C54677	C83975	C84216	C84271
M12 x 1.75	.4724	4	D6	3.375	1.656	C54689	C83813	C54690	C83883	C54691	C83976	C54692	C84272
M14 x 1.5	.5512	4	D6	3.594	1.656	C54751	C83814	C54752	C83884	C54753	C83977	C84217	C84273
M14 x 2	.5512	4	D7	3.594	1.656	C54755	C83815	C54756	C83885	C54757	C83978	C54758	C84274
M16 x 1.5	.6299	4	D6	3.813	1.813	C54797	—	C54798	—	C54799	—	—	—
M16 x 2	.6299	4	D7	3.813	1.813	C54801	C83816	C54802	C83886	C54803	C83979	C54804	C84275
M18 x 1.5	.7087	4	D6	4.031	1.813	C54825	—	C54826	—	C83929	—	—	—
M18 x 2.5	.7087	4	D7	4.031	1.813	C54833	—	C54834	—	C54835	—	C84218	—
M20 x 1.5	.7874	4	D6	4.469	2.000	C83382	—	C54857	—	C54858	—	C84219	—
M20 x 2.5	.7874	4	D7	4.469	2.000	C54864	—	C54865	C83887	C54866	C83980	C54867	—
M24 x 3	.9449	4	D8	4.906	2.219	C54907	—	C54908	C83888	C54909	—	C84220	—
M30 x 3.5	1.1811	4	D9	5.438	2.563	—	—	C54991	—	C83930	C83981	—	—





**COLORS INDICATES**

**NEW - NOW IN STOCK**

**NEW - COMING SOON**

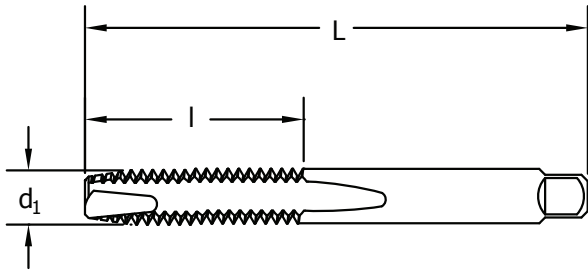
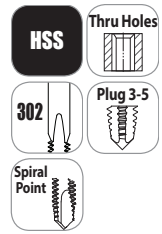
**New Product Release June, 2023**



**General Purpose Tap - Inch**

**Styles: 1011, 1011SO, 1011TN, 1011TC, 1012, 1012TN**

Effective March 2023: These tap are being converted from 302A to 302 design.



**Feature:**

Thru hole application in a variety of materials.

tap size and pitch	thread form	decimal equiv	no. of flutes	H-limit	overall length L (in)	thread length l (in)	order number					
							1011 Bright	1011SO Black Oxide	1011TN TiN	1011TC TiCN	1012 Bright	1012TN TiN
0-80	UNF	0.060	2	H1	1.625	.313	C57009	—	—	—	—	—
0-80	UNF	0.060	2	H2	1.625	.313	C57011	C57600	C55290	C55370	C57012	—
1-64	UNC	0.073	2	H2	1.688	.375	C57022	—	C83054	—	—	—
1-72	UNF	0.073	2	H1	1.688	.375	C57023	—	—	—	—	—
1-72	UNF	0.073	2	H2	1.688	.375	C57024	—	C83055	—	—	—
2-56	UNC	0.086	2	H1	1.750	.438	C83040	—	—	—	—	—
2-56	UNC	0.086	2	H2	1.750	.438	C57031	C57602	C55292	C55372	C57032	—
2-64	UNF	0.086	2	H2	1.750	.438	C57033	—	—	—	—	—
3-48	UNC	0.099	2	H2	1.813	.500	C57038	—	C55294	—	—	—
3-56	UNF	0.099	2	H2	1.813	.500	C57041	—	C83056	—	—	—
4-40	UNC	0.112	2	H1	1.875	.563	C57047	—	—	—	—	—
4-40	UNC	0.112	2	H2	1.875	.563	C57048	C57604	C55296	C55374	C57049	C83347
4-48	UNF	0.112	2	H2	1.875	.563	C57051	—	C83057	—	—	—
5-40	UNC	0.125	2	H1	1.938	.625	C83041	—	—	—	—	—
5-40	UNC	0.125	2	H2	1.938	.625	C57062	C57606	C55298	C55376	C57063	—
6-32	UNC	0.138	2	H1	2.000	.688	C57069	—	—	—	—	—
6-32	UNC	0.138	2	H2	2.000	.688	C57070	C57608	C55299	C83069	C83074	—
6-32	UNC	0.138	2	H3	2.000	.688	C57072	C57609	C55300	C55378	C57073	C83348
6-32	UNC	0.138	2	H7	2.000	.688	C57074	—	—	—	—	—
6-40	UNF	0.138	2	H2	2.000	.688	C57076	—	C55302	—	—	—
8-32	UNC	0.164	2	H1	2.125	.750	C83042	—	—	—	—	—
8-32	UNC	0.164	2	H2	2.125	.750	C57083	C57610	C55303	—	C83075	—
8-32	UNC	0.164	2	H3	2.125	.750	C57085	C57611	C55304	C55380	C57086	C83349
8-32	UNC	0.164	2	H7	2.125	.750	C57087	—	C55305	—	—	—
8-36	UNF	0.164	2	H2	2.125	.750	C57089	—	C55306	—	—	—
10-24	UNC	0.190	2	H1	2.375	.875	C57094	—	—	—	—	—
10-24	UNC	0.190	2	H2	2.375	.875	C57095	—	C55307	—	C83076	—
10-24	UNC	0.190	2	H3	2.375	.875	C57097	C57001	C55308	C55382	C57098	C83350
10-24	UNC	0.190	2	H7	2.375	.875	C57099	—	C55309	—	—	—
10-32	UNF	0.190	2	H1	2.375	.875	C83043	—	—	—	—	—
10-32	UNF	0.190	2	H2	2.375	.875	C57102	—	C55311	—	C83077	—
10-32	UNF	0.190	2	H3	2.375	.875	C57104	C57002	C55310	C55383	C57105	C83351
10-32	UNF	0.190	2	H7	2.375	.875	C57106	—	C55346	—	—	—
12-24	UNC	0.216	2	H1	2.375	.938	C83044	—	—	—	—	—
12-24	UNC	0.216	2	H3	2.375	.938	C57112	C57616	C55312	C55384	C83078	C83352
12-28	UNF	0.216	2	H3	2.375	.938	C57114	—	C55313	—	—	—

continued on next page





**COLORS INDICATES**

**NEW - NOW IN STOCK**

**NEW - COMING SOON**

**New Product Release June, 2023**



**General Purpose Tap - Inch (Continued)**  
**Styles: 1011, 1011SO, 1011TN, 1011TC, 1012, 1012TN**

tap size and pitch	thread form d <sub>1</sub>	decimal equiv	no. of flutes	H-limit	overall length L (in)	thread length I (in)	order number					
							Plug			Bottoming		
							1011 Bright	1011SO Black Oxide	1011TN TiN	1011TC TiCN	1012 Bright	1012TN TiN
1/4-20	UNC	0.250	2	H1	2.500	1.000	C57127	—	C55348	—	—	—
1/4-20	UNC	0.250	2	H2	2.500	1.000	C57128	C57618	C55315	C83070	C83079	—
1/4-20	UNC	0.250	2	H3	2.500	1.000	C57129	C57619	C55316	C83071	C57131	C83353
1/4-20	UNC	0.250	2	H5	2.500	1.000	C57132	—	C55317	—	—	—
1/4-20	UNC	0.250	2	H11	2.500	1.000	C57135	—	—	—	—	—
1/4-20	UNC	0.250	3	H3	2.500	1.000	C57130	C57620	C83058	C55386	C83080	C83354
1/4-20	UNC	0.250	3	H5	2.500	1.000	C57133	—	C83059	—	—	—
1/4-20	UNC	0.250	2	H13	2.500	1.000	C83045	—	C83059	—	—	—
1/4-28	UNF	0.250	2	H2	2.500	1.000	C57137	—	—	—	—	—
1/4-28	UNF	0.250	2	H3	2.500	1.000	C57139	C57622	C55318	C83072	C57140	C83355
1/4-28	UNF	0.250	3	H2	2.500	1.000	C57138	—	—	C55387	—	—
5/16-18	UNC	0.313	2	H1	2.719	1.125	C57149	—	—	—	—	—
5/16-18	UNC	0.313	2	H2	2.719	1.125	C57150	—	C55319	—	—	—
5/16-18	UNC	0.313	2	H3	2.719	1.125	C57151	C57624	C55320	C83073	C83081	C83356
5/16-18	UNC	0.313	2	H5	2.719	1.125	C57154	—	C55354	—	—	—
5/16-18	UNC	0.313	3	H3	2.719	1.125	C57152	C57625	C55321	C55388	C57153	C83357
5/16-18	UNC	0.313	3	H5	2.719	1.125	C57155	—	C55355	—	—	—
5/16-18	UNC	0.313	3	H13	2.719	1.125	C83046	—	—	—	—	—
5/16-24	UNF	0.313	2	H1	2.719	1.125	C57157	—	—	—	—	—
5/16-24	UNF	0.313	2	H2	2.719	1.125	C83047	—	—	—	—	—
5/16-24	UNF	0.313	2	H3	2.719	1.125	C57160	C57626	C55322	—	C57162	—
5/16-24	UNC	0.313	3	H4	2.719	1.125	C57164	—	—	C55389	—	—
3/8-16	UNC	0.375	3	H2	2.938	1.250	C57175	—	C55323	—	—	—
3/8-16	UNC	0.375	3	H3	2.938	1.250	C57176	C57628	C55324	C55390	C83082	C83358
3/8-16	UNC	0.375	3	H5	2.938	1.250	C57177	—	C55325	—	—	—
3/8-24	UNF	0.375	3	H1	2.938	1.250	C57179	—	—	—	—	—
3/8-24	UNF	0.375	3	H2	2.938	1.250	C57180	—	—	—	—	—
3/8-24	UNF	0.375	3	H3	2.938	1.250	C57181	C57630	C55326	C55391	C83083	—
3/8-24	UNF	0.375	3	H4	2.938	1.250	C57182	—	—	—	—	—
7/16-14	UNC	0.438	3	H2	3.156	1.438	C57191	—	—	—	—	—
7/16-14	UNC	0.438	3	H3	3.156	1.438	C57192	C57632	C55328	—	C83084	—
7/16-14	UNC	0.438	3	H5	3.156	1.438	C57193	—	—	—	—	—
7/16-20	UNF	0.438	3	H3	3.156	1.438	C57195	—	C55330	C55392	C83085	—
7/16-20	UNF	0.438	3	H5	3.156	1.438	C57196	—	—	—	—	—
1/2-13	UNC	0.500	3	H2	3.375	1.656	C57214	—	—	—	—	—
1/2-13	UNC	0.500	3	H3	3.375	1.656	C57215	C57636	C55332	C55394	C83086	C83359
1/2-13	UNC	0.500	3	H5	3.375	1.656	C57216	—	C55333	—	—	—
1/2-20	UNF	0.500	3	H2	3.375	1.656	C83048	—	—	—	—	—
1/2-20	UNF	0.500	3	H3	3.375	1.656	C57220	C57638	C55334	C55395	C83087	—
1/2-20	UNF	0.500	3	H5	3.375	1.656	C83049	—	—	—	—	—
9/16-12	UNC	0.563	3	H3	3.594	1.656	C83050	—	—	—	—	—
9/16-12	UNC	0.563	3	H5	3.594	1.656	C83051	—	—	—	—	—
9/16-18	UNF	0.563	3	H3	3.594	1.656	C83052	—	—	—	—	—
5/8-11	UNC	0.625	3	H3	3.813	1.813	C57230	C57640	C55336	C55396	C83088	—
5/8-11	UNC	0.625	3	H5	3.813	1.813	C57232	—	C83061	—	—	—
5/8-18	UNF	0.625	3	H3	3.813	1.813	C57555	C57642	—	—	—	—
3/4-10	UNC	0.750	3	H3	4.250	2.000	C57246	C57644	C55338	C55398	C83089	—
3/4-10	UNC	0.750	3	H5	4.250	2.000	C57247	—	—	—	—	—
3/4-16	UNF	0.750	3	H3	4.250	2.000	C60999	—	—	—	—	—



**COLORS INDICATES**

New Product Release June, 2023

**NEW - NOW IN STOCK**

**NEW - COMING SOON**



**General Purpose Tap - Metric**  
**Styles: 1011, 1011TN, 1011TC, 1012**

tap size and pitch <b>d<sub>1</sub></b>	decimal equiv	no. of flutes	D- limit	overall length <b>L (in)</b>	thread length <b>I (in)</b>	order number			Bottoming <b>1012</b> Bright
						<b>1011</b> Bright	Plug <b>1011TN</b> TiN	<b>1011TC</b> TiCN	
M1.6 x 0.35	0.063	2	D3	1.625	.313	C57015	C83062	—	C83090
M1.8 x 0.35	0.071	2	D3	1.688	.375	C57019	—	—	—
M2 x 0.4	0.079	2	D3	1.750	.438	C57027	C83063	—	C83091
M2.2 x 0.45	0.087	2	D3	1.750	.438	C57036	—	—	—
M2.5 x 0.45	0.098	2	D3	1.813	.500	C57044	C83064	—	C83092
M3 x 0.5	0.118	2	D3	1.938	.625	C57055	C55360	C55415	C83093
M3.5 x 0.6	0.138	2	D4	2.000	.688	C57067	—	—	—
M4 x 0.7	0.158	2	D4	2.125	.750	C57080	C55361	C55416	C83094
M4.5 x 0.75	0.177	2	D4	2.375	.875	C57092	—	—	—
M5 x 0.8	0.197	2	D4	2.375	.875	C57110	C83065	C55417	C83095
M6 x 1.0	0.236	2	D5	2.500	1.000	C57118	C55362	C55418	C83096
M7 x 1.0	0.276	2	D5	2.719	1.125	C57146	—	—	—
M8 x 1.0	0.315	2	D5	2.719	1.125	C57168	C83066	—	C83097
M8 x 1.25	0.315	2	D5	2.719	1.125	C57171	C55363	C55419	C83098
M10 x 1.25	0.394	3	D5	2.938	1.250	C57187	C83067	—	C83099
M10 x 1.5	0.394	3	D6	2.938	1.250	C57189	C55364	C55420	C83345
M12 x 1.25	0.472	3	D5	3.375	1.656	C57199	C83068	—	—
M12 x 1.75	0.472	3	D6	3.375	1.656	C57203	C55365	C55421	C83346
M14 x 1.5	0.551	3	D6	3.594	1.656	C57226	—	—	—
M14 x 2	0.551	3	D7	3.594	1.656	C57228	—	—	—
M16 x 1.5	0.630	3	D6	3.813	1.813	C57234	—	—	—
M16 x 2	0.630	3	D7	3.813	1.813	C57236	—	—	—
M18 x 2.5	0.709	3	D7	4.031	1.813	C83053	—	—	—
M20 x 2.5	0.787	3	D7	4.469	2.000	C57253	—	—	—



# CL NEW SIZES

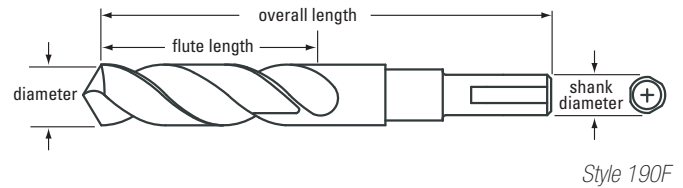
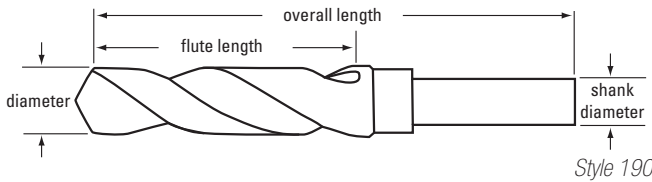
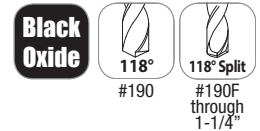
Chicago-Latrobe®

COLORS INDICATES

Yellow Shading indicates  
NEW - NOW IN STOCK

Blue Shading indicates  
NEW - COMING SOON

**CL Silver & Deming - 1/2" Reduced Shank**  
 Styles: 190, 190F



order number

drill diameter mm	decimal equivalent	overall length		flute length		190	190F
		Inch	mm	Inch	mm	Round Shank Black Oxide	(3)Flatted Shank Black Oxide
13.0	.5118	6.000	152	3.125	79	55500	52500
13.5	.5315	6.000	152	3.125	79	55501	52501
14.0	.5512	6.000	152	3.125	79	55502	52502
14.5	.5709	6.000	152	3.125	79	55503	52503
15.0	.5906	6.000	152	3.125	79	55504	52504
15.5	.6102	6.000	152	3.125	79	55505	52505
16.0	.6299	6.000	152	3.125	79	55506	52506
16.5	.6496	6.000	152	3.125	79	55507	52507
17.0	.6693	6.000	152	3.125	79	55508	52508
17.5	.6890	6.000	152	3.125	79	55509	52509
18.0	.7087	6.000	152	3.125	79	55510	52510
18.5	.7283	6.000	152	3.125	79	55511	52511
19.0	.7480	6.000	152	3.125	79	55512	52512
19.5	.7677	6.000	152	3.125	79	55513	52513
20.0	.7874	6.000	152	3.125	79	55514	52514
21.0	.8268	6.000	152	3.125	79	55515	52515
22.0	.8661	6.000	152	3.125	79	55516	52516
23.0	.9055	6.000	152	3.125	79	55517	52517
24.0	.9449	6.000	152	3.125	79	55518	52518
25.0	.9843	6.000	152	3.125	79	55519	52519

**COLORS INDICATES**

**NEW - NOW IN STOCK**

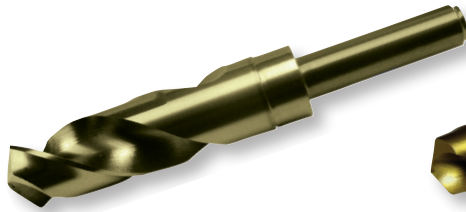
**NEW - COMING SOON**

**New Product Release June, 2023**



**Silver & Deming - 1/2" Reduced Shank**

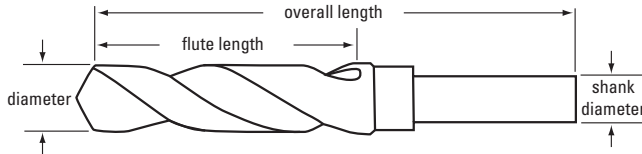
**Styles: 190C, 190C-TN**



Style 190C Straw Finish

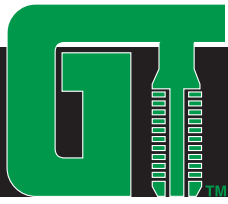


Style 190C-TN TIN-coated



Drill Diameter		Shank Diameter		Overall Length		Flute Length		Order Number	
Fraction	Decimal	mm	Inch	mm	Inch	mm	inch	190C Straw	190C-TN TiN
1/2	.5000	12.70	.5000	12.70	6.0000	152.40	3.1250	53432	53400
33/64	.5156	13.10	.5000	12.70	6.0000	152.40	3.1250	53433	53401
17/32	.5312	13.49	.5000	12.70	6.0000	152.40	3.1250	53434	53634
35/64	.5469	13.89	.5000	12.70	6.0000	152.40	3.1250	53435	53402
9/16	.5625	14.29	.5000	12.70	6.0000	152.40	3.1250	53436	53636
37/64	.5781	14.68	.5000	12.70	6.0000	152.40	3.1250	53437	53403
19/32	.5938	15.08	.5000	12.70	6.0000	152.40	3.1250	53438	53638
39/64	.6094	15.48	.5000	12.70	6.0000	152.40	3.1250	53439	53404
5/8	.6250	15.88	.5000	12.70	6.0000	152.40	3.1250	53440	53640
41/64	.6406	16.27	.5000	12.70	6.0000	152.40	3.1250	53441	53405
21/32	.6562	16.67	.5000	12.70	6.0000	152.40	3.1250	53442	53642
43/64	.6719	17.07	.5000	12.70	6.0000	152.40	3.1250	53443	53406
11/16	.6875	17.46	.5000	12.70	6.0000	152.40	3.1250	53444	53644
45/64	.7031	17.86	.5000	12.70	6.0000	152.40	3.1250	53445	53407
23/32	.7188	18.26	.5000	12.70	6.0000	152.40	3.1250	53446	53646
47/64	.7344	18.65	.5000	12.70	6.0000	152.40	3.1250	53447	53408
3/4	.7500	19.05	.5000	12.70	6.0000	152.40	3.1250	53448	53648
49/64	.7656	19.45	.5000	12.70	6.0000	152.40	3.1250	53449	53409
25/32	.7812	19.84	.5000	12.70	6.0000	152.40	3.1250	53450	53650
51/64	.7969	20.24	.5000	12.70	6.0000	152.40	3.1250	53451	53410
13/16	.8125	20.64	.5000	12.70	6.0000	152.40	3.1250	53452	53652
53/64	.8281	21.03	.5000	12.70	6.0000	152.40	3.1250	53453	53411
27/32	.8438	21.43	.5000	12.70	6.0000	152.40	3.1250	53454	53654
55/64	.8594	21.83	.5000	12.70	6.0000	152.40	3.1250	53455	53412
7/8	.8750	22.23	.5000	12.70	6.0000	152.40	3.1250	53456	53656
57/64	.8906	22.62	.5000	12.70	6.0000	152.40	3.1250	53457	53413
29/32	.9062	23.02	.5000	12.70	6.0000	152.40	3.1250	53458	53658
59/64	.9219	23.42	.5000	12.70	6.0000	152.40	3.1250	53459	53414
15/16	.9375	23.81	.5000	12.70	6.0000	152.40	3.1250	53460	53660
61/64	.9531	24.21	.5000	12.70	6.0000	152.40	3.1250	53461	53415
31/32	.9688	24.61	.5000	12.70	6.0000	152.40	3.1250	53462	53662
63/64	.9844	25.00	.5000	12.70	6.0000	152.40	3.1250	53463	53416
1	1.0000	25.40	.5000	12.70	6.0000	152.40	3.1250	53464	53664
1-1/16	1.0625	26.99	.5000	12.70	6.0000	152.40	3.1250	53468	53417
1-1/8	1.1250	28.58	.5000	12.70	6.0000	152.40	3.1250	53472	53418
1-3/16	1.1875	30.16	.5000	12.70	6.0000	152.40	3.1250	53475	53419
1-1/4	1.2500	31.75	.5000	12.70	6.0000	152.40	3.1250	53480	53420
1-3/8	1.3750	34.93	.5000	12.70	6.0000	152.40	3.1250	53488	53421
1-1/2	1.5000	38.10	.5000	12.70	6.0000	152.40	3.1250	53496	53422





# NEW TAP SIZES & SETS

**GREENFIELD  
THREADING**

**COLORS INDICATES**

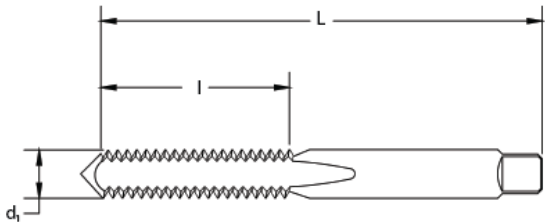
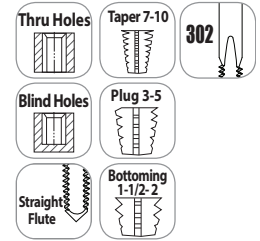
Yellow Shading indicates  
**NEW - NOW IN STOCK**

Blue Shading indicates  
**NEW - COMING SOON**



**General Purpose Straight Flute - Inch**  
Style: **HTGP**

Effective March 2023: These tap are being converted from 302A to 302 design.



diameter & pitch	thrd form	d <sub>1</sub> in	no. flts	H-limit	L in	l in	taper		order number				bottoming		set	
							Bright	TiN	Bright	Black Oxide	TiN	TiCN	Bright	TiN	Bright	TiN
0-80	UNF	0.060	2	H1	1.625	0.313	330004	—	330016	—	—	—	330066	—	—	—
0-80	UNF	0.060	2	H2	1.625	0.313	173055	—	300041	—	300047	—	300058	300054	173203	—
1-64	UNC	0.073	2	H1	1.688	0.375	330005	—	330017	—	173117	—	330067	173182	173204	—
1-64	UNC	0.073	2	H2	1.688	0.375	173056	—	173092	—	—	—	173151	—	—	—
1-72	UNF	0.073	2	H1	1.688	0.375	330006	—	300165	—	173118	—	330068	173183	173205	—
1-72	UNF	0.073	2	H2	1.688	0.375	173057	—	173093	—	—	—	173152	—	—	—
2-56	UNC	0.086	2	H2	1.750	0.438	173058	—	330018	—	—	—	330069	—	—	—
2-56	UNC	0.086	3	H1	1.750	0.438	330007	—	330019	—	—	—	300264	—	—	—
2-56	UNC	0.086	3	H2	1.750	0.438	300272	300278	300280	—	300286	330035	300299	300294	341573	174511
2-64	UNF	0.086	3	H2	1.750	0.438	330008	—	330020	—	—	—	330070	—	173206	—
3-48	UNC	0.099	3	H2	1.813	0.500	300512	339044	300520	—	300526	—	300538	339045	341599	355802
3-56	UNF	0.099	3	H2	1.813	0.500	300637	339046	300645	—	339047	—	300652	339048	341607	355803
4-40	UNC	0.112	2	H1	1.875	0.563	—	—	330021	—	—	—	—	—	—	—
4-40	UNC	0.112	2	H2	1.875	0.563	—	—	300769	—	—	—	300778	—	—	—
4-40	UNC	0.112	3	H2	1.875	0.563	300819	300815	300827	—	300823	330036	300835	300831	341623	174530
4-48	UNF	0.112	3	H2	1.875	0.563	300934	300930	300942	—	300948	—	300959	300955	341649	174531
5-40	UNC	0.125	2	H2	1.938	0.625	—	—	301007	—	—	—	301015	—	—	—
5-40	UNC	0.125	3	H2	1.938	0.625	301056	301052	301064	—	301060	—	301072	301078	341664	174536
5-44	UNF	0.125	3	H2	1.938	0.625	301171	301177	301189	—	173119	—	301197	301193	341672	174537
6-32	UNC	0.138	2	H2	2.000	0.688	173059	—	301247	—	173120	—	301254	173184	173207	—
6-32	UNC	0.138	2	H3	2.000	0.688	173060	173078	301270	—	173121	173141	301288	173185	173208	173227
6-32	UNC	0.138	3	H2	2.000	0.688	301320	173079	301338	—	330062	—	301346	173186	341698	173228
6-32	UNC	0.138	3	H3	2.000	0.688	301353	301359	301361	330037	301367	330038	301379	301375	341706	174538
6-40	UNF	0.138	3	H2	2.000	0.688	301478	301474	301486	—	301482	—	301494	301490	341714	174539
8-32	UNC	0.164	2	H1	2.125	0.750	—	—	330022	—	—	—	173153	—	—	—
8-32	UNC	0.164	2	H2	2.125	0.750	173061	173080	301544	—	173122	—	301551	—	173209	—

continued on next page



**COLORS INDICATES**

**NEW - NOW IN STOCK**

**NEW - COMING SOON**

**New Product Release June, 2023**

**General Purpose Straight Flute - Inch (Continued)**  
**Style: HTGP**

diameter & pitch	thrd form	d <sub>i</sub> in	no. flts	H- limit	L in	l in	order number									
							taper		Bright	Black Oxide	plug		bottoming		set	
							Bright	TiN			TiN	TiCN	Bright	TiN	Bright	TiN
8-32	UNC	0.164	2	H3	2.125	0.750	173062	173081	301577	—	173123	173142	301585	173187	173210	173229
8-32	UNC	0.164	3	H2	2.125	0.750	—	—	301635	—	—	—	301643	—	—	—
8-32	UNC	0.164	3	H3	2.125	0.750	173063	—	301668	—	173124	—	301676	173188	173211	—
8-32	UNC	0.164	4	H2	2.125	0.750	301718	173082	301726	—	330063	—	301734	—	341730	—
8-32	UNC	0.164	4	H3	2.125	0.750	301742	301748	301759	330039	301755	330040	301767	301763	341748	174544
8-36	UNF	0.164	4	H2	2.125	0.750	301924	301920	301933	—	301938	—	301940	301946	341755	174545
10-24	UNC	0.190	2	H2	2.375	0.875	—	—	301999	—	—	—	173154	—	—	—
10-24	UNC	0.190	2	H3	2.375	0.875	173064	—	302021	—	173125	—	302039	173189	173212	—
10-24	UNC	0.190	3	H3	2.375	0.875	173065	—	302112	—	173126	—	302120	173190	173213	—
10-24	UNC	0.190	4	H2	2.375	0.875	302161	—	302179	—	—	—	302187	—	341771	—
10-24	UNC	0.190	4	H3	2.375	0.875	302195	302191	302203	330041	302209	330042	302211	302217	341789	174508
10-32	UNF	0.190	2	H2	2.375	0.875	173066	—	302260	—	173127	—	302278	—	—	—
10-32	UNF	0.190	2	H3	2.375	0.875	173067	173083	302294	—	173128	173143	302302	173191	173214	173230
10-32	UNF	0.190	3	H2	2.375	0.875	—	—	173094	—	173129	—	173155	—	—	—
10-32	UNF	0.190	3	H3	2.375	0.875	—	—	302385	—	330045	—	302393	—	—	—
10-32	UNF	0.190	4	H2	2.375	0.875	302435	173084	302443	—	173130	—	302450	173192	341805	173231
10-32	UNF	0.190	4	H3	2.375	0.875	302468	302464	302476	330043	302472	330044	302484	302480	341813	174509
12-24	UNC	0.216	4	H3	2.375	0.938	302526	302522	302534	—	302530	—	302542	302548	341821	174510
12-28	UNF	0.216	4	H3	2.375	0.938	302583	—	302591	—	330046	—	302609	330079	341839	—
1/4-20	UNC	0.250	2	H3	2.500	1.000	173068	173085	326004	—	173131	173144	326012	173193	173215	173233
1/4-20	UNC	0.250	3	H2	2.500	1.000	—	—	330024	—	—	—	173156	—	—	—
1/4-20	UNC	0.250	3	H3	2.500	1.000	173069	173086	326160	—	173132	173145	326178	173194	173216	173234
1/4-20	UNC	0.250	3	H5	2.500	1.000	—	—	330025	—	—	—	173157	—	—	—
1/4-20	UNC	0.250	4	H1	2.500	1.000	305008	—	305016	—	—	—	305024	—	330080	—
1/4-20	UNC	0.250	4	H2	2.500	1.000	305033	—	305040	—	—	—	305057	—	342514	—
1/4-20	UNC	0.250	4	H3	2.500	1.000	305065	305061	305073	330047	305079	330048	305081	305087	342522	174506
1/4-20	UNC	0.250	4	H5	2.500	1.000	173070	—	305107	—	305103	—	305115	305111	173217	—
1/4-20	UNC	0.250	4	H11	2.500	1.000	—	—	330026	—	—	—	—	—	—	—
1/4-28	UNF	0.250	2	H3	2.500	1.000	—	—	326087	—	—	—	326095	—	—	—
1/4-28	UNF	0.250	3	H3	2.500	1.000	—	—	326244	—	326240	—	326251	—	—	—
1/4-28	UNF	0.250	4	H2	2.500	1.000	—	—	305198	—	—	—	305206	305209	—	—
1/4-28	UNF	0.250	4	H3	2.500	1.000	305214	305210	305222	330049	305228	330051	305230	305236	342530	174507
1/4-28	UNF	0.250	4	H4	2.500	1.000	—	—	173095	—	—	—	173158	—	—	—
5/16-18	UNC	0.313	2	H3	2.719	1.125	173071	—	326285	—	173133	—	326293	173195	173218	—
5/16-18	UNC	0.313	3	H3	2.719	1.125	173072	—	326368	—	173134	—	326376	173196	—	—
5/16-18	UNC	0.313	3	H5	2.719	1.125	—	—	173096	—	—	—	173159	—	—	—
5/16-18	UNC	0.313	4	H2	2.719	1.125	—	—	305370	—	—	—	305388	—	—	—
5/16-18	UNC	0.313	4	H3	2.719	1.125	305396	305392	305404	330052	305403	330053	305412	305418	342555	174532
5/16-18	UNC	0.313	4	H5	2.719	1.125	—	—	305438	—	—	—	305446	—	—	—
5/16-18	UNC	0.313	4	H11	2.719	1.125	—	—	330027	—	—	—	—	—	—	—
5/16-24	UNF	0.313	3	H3	2.719	1.125	—	—	326442	—	—	—	326459	—	—	—
5/16-24	UNF	0.313	4	H2	2.719	1.125	173073	—	173097	—	—	—	173160	—	—	—
5/16-24	UNF	0.313	4	H3	2.719	1.125	305511	305517	305529	—	305525	—	305537	305533	342563	174533
5/16-24	UNF	0.313	4	H4	2.719	1.125	—	—	305552	—	—	—	305560	—	—	—
3/8-16	UNC	0.375	3	H3	2.938	1.250	173074	—	326525	—	326521	—	326533	326539	173219	—
3/8-16	UNC	0.375	3	H5	2.938	1.250	—	—	173098	—	—	—	173161	—	—	—
3/8-16	UNC	0.375	4	H2	2.938	1.250	—	—	305677	—	173135	—	305685	—	—	—
3/8-16	UNC	0.375	4	H3	2.938	1.250	305693	305699	305701	330055	305707	330057	305719	305715	342589	174528
3/8-16	UNC	0.375	4	H5	2.938	1.250	—	—	305735	—	305731	—	305743	305749	—	—
3/8-24	UNF	0.375	3	H3	2.938	1.250	—	—	326608	—	—	—	326616	—	—	—
3/8-24	UNF	0.375	4	H2	2.938	1.250	—	—	173099	—	—	—	173162	—	—	—
3/8-24	UNF	0.375	4	H3	2.938	1.250	305818	305814	305826	330058	305822	173146	305834	305830	342597	174529
3/8-24	UNF	0.375	4	H5	2.938	1.250	—	—	173100	—	—	—	173163	—	—	—
7/16-14	UNC	0.438	3	H3	3.156	1.438	—	—	173101	—	—	—	173164	—	—	—

continued on next page





**COLORS INDICATES**

**NEW - NOW IN STOCK**

**NEW - COMING SOON**

**New Product Release June, 2023**



**General Purpose Straight Flute - Inch (Continued)**  
**Style: HTGP**

diameter & pitch	thrd form	d <sub>i</sub> in	no. flts	H- limit	L in	l in	order number									
							taper		plug				bottoming		set	
							Bright	TiN	Bright	Black Oxide	TiN	TiCN	Bright	TiN	Bright	TiN
7/16-14	UNC	0.438	4	H2	3.156	1.438			173102	—	—	—	173165	—	—	—
7/16-14	UNC	0.438	4	H3	3.156	1.438	305990	305996	306006	—	306002	173147	306014	306010	342605	174540
7/16-14	UNC	0.438	4	H5	3.156	1.438	—	—	306030	—	306036	—	306048	306044	—	—
7/16-20	UNF	0.438	3	H3	3.156	1.438	—	—	173103	—	—	—	173166	—	—	—
7/16-20	UNF	0.438	4	H2	3.156	1.438	—	—	173104	—	—	—	173167	—	—	—
7/16-20	UNF	0.438	4	H3	3.156	1.438	306113	306119	306121	—	306127	—	306139	306135	342613	174541
7/16-20	UNF	0.438	4	H5	3.156	1.438	—	—	306154	—	306157	—	306162	306165	—	—
1/2-13	UNC	0.500	3	H3	3.375	1.656	173075	—	326681	—	173136	—	326699	173197	173220	—
1/2-13	UNC	0.500	4	H1	3.375	1.656	—	—	306246	—	—	—	—	—	—	—
1/2-13	UNC	0.500	4	H2	3.375	1.656	173076	—	173105	—	—	—	173168	—	—	—
1/2-13	UNC	0.500	4	H3	3.375	1.656	306295	306291	306303	330059	306309	330060	306311	306317	342621	174504
1/2-13	UNC	0.500	4	H5	3.375	1.656	—	—	306337	—	—	—	306345	306341	—	—
1/2-20	UNF	0.500	3	H3	3.375	1.656	—	—	326707	—	—	—	—	—	—	—
1/2-20	UNF	0.500	4	H3	3.375	1.656	306444	306440	306451	—	306457	—	306469	306465	342639	174505
1/2-20	UNF	0.500	4	H5	3.375	1.656	—	—	306485	—	—	—	—	—	—	—
9/16-12	UNC	0.563	4	H3	3.594	1.656	306626	306622	306634	—	306630	—	306642	306648	342647	174546
9/16-12	UNC	0.563	4	H5	3.594	1.656	—	—	173106	—	—	—	173169	—	—	—
9/16-18	UNF	0.563	4	H3	3.594	1.656	306741	—	306758	—	306754	—	306766	306762	342654	—
9/16-18	UNF	0.563	4	H5	3.594	1.656	—	—	173107	—	—	—	173170	—	—	—
5/8-11	UNC	0.625	4	H2	3.813	1.813	—	—	173108	—	—	—	173171	—	—	—
5/8-11	UNC	0.625	4	H3	3.813	1.813	306923	306929	306931	330061	306937	173148	306949	306945	342662	174534
5/8-11	UNC	0.625	4	H5	3.813	1.813	—	—	306964	—	—	—	306972	306978	—	—
5/8-18	UNF	0.625	4	H3	3.813	1.813	307046	307042	307053	—	307059	—	307061	307067	342670	174535
5/8-18	UNF	0.625	4	H5	3.813	1.813	—	—	173109	—	—	—	173172	—	—	—
11/16-11	UNS	0.688	4	H3	4.031	1.813	307160	—	307178	—	—	—	307186	—	342688	—
11/16-16	UNS	0.688	4	H3	4.031	1.813	307194	—	307202	—	—	—	307210	—	342696	—
3/4-10	UNC	0.750	4	H2	4.250	2.000	—	—	173110	—	—	—	173173	—	—	—
3/4-10	UNC	0.750	4	H3	4.250	2.000	307343	307349	307350	—	307356	173149	307368	307364	342704	174513
3/4-10	UNC	0.750	4	H5	4.250	2.000	—	—	173111	—	—	—	173174	—	—	—
3/4-16	UNF	0.750	4	H2	4.250	2.000	—	—	173112	—	—	—	173175	—	—	—
3/4-16	UNF	0.750	4	H3	4.250	2.000	307467	307463	307475	—	307471	—	307483	307489	342712	174514
3/4-16	UNF	0.750	4	H5	4.250	2.000	—	—	173113	—	—	—	173176	—	—	—
7/8-9	UNC	0.875	4	H4	4.468	2.219	307707	307703	307715	—	307711	—	307723	307729	342720	174543
7/8-9	UNC	0.875	4	H6	4.468	2.219	—	—	173114	—	—	—	173177	—	—	—
7/8-14	UNF	0.875	4	H4	4.468	2.219	307822	307828	307830	—	307836	173150	307848	307844	342738	174542
7/8-14	UNF	0.875	4	H6	4.468	2.219	—	—	173115	—	—	—	173178	—	—	—
1-8	UNC	1.000	4	H4	5.125	2.500	308069	308065	308077	—	308073	—	308085	308081	342746	174503
1-12	UNF	1.000	4	H4	5.125	2.500	308184	—	308192	—	330065	—	308200	—	—	—
1-14	UNS	1.000	4	H4	5.125	2.500	308275	—	308283	—	—	—	308291	—	342761	—
1-1/8-7	UNC	1.125	4	H4	5.438	2.563	308424	—	308432	—	—	—	308440	—	—	—
1-1/8-12	UNF	1.125	4	H4	5.438	2.563	308457	—	308465	—	—	—	308473	—	—	—
1-1/4-7	UNC	1.250	4	H4	5.750	2.563	308549	—	308556	—	—	—	308564	—	—	—
1-1/4-12	UNF	1.250	6	H4	5.750	2.563	308572	—	308580	—	—	—	308598	—	—	—
1-3/8-6	UNC	1.375	4	H4	6.063	3.000	—	—	308671	—	—	—	—	—	—	—
1-3/8-12	UNF	1.375	6	H4	6.063	3.000	—	—	308705	—	—	—	308713	—	—	—
1-1/2-6	UNC	1.500	4	H4	6.375	3.000	308788	—	308796	—	—	—	308804	—	—	—
1-1/2-12	UNF	1.500	6	H4	6.375	3.000	308812	—	308820	—	—	—	308838	—	—	—





**COLORS INDICATES**

**NEW - NOW IN STOCK**

**NEW - COMING SOON**

**New Product Release June, 2023**

**General Purpose Straight Flute - Metric**  
**Style: HTGP**

diameter & pitch	d <sub>1</sub> in	no. flts	D limit	L in	l in	order number									
						taper		plug				bottoming		set	
						Bright	TIN	Bright	Black Oxide	TIN	TiCN	Bright	TIN	Bright	TIN
M1.6 x 0.35	0.063	2	D3	1.625	0.313	—	—	328018	—	—	—	330071	—	—	—
M2 x 0.4	0.079	3	D3	1.750	0.438	328067	328684	328075	—	328685	—	328083	328686	174516	343502
M2.5 x 0.45	0.098	3	D3	1.813	0.500	328158	328688	328166	—	328689	—	328174	328690	174559	343503
M3 x 0.5	0.118	3	D3	1.938	0.625	328182	328691	328190	—	328188	—	328208	328205	174519	343504
M3.5 x 0.6	0.138	3	D4	2.000	0.688	328240	173087	328257	—	328693	—	328265	173198	174560	173235
M4 x 0.7	0.158	4	D4	2.125	0.750	328273	328695	328281	—	328287	—	328299	328295	174520	343506
M4.5 x 0.75	0.177	4	D4	2.375	0.875	328331	—	328349	—	328697	—	328356	—	174561	—
M5 x 0.8	0.197	4	D4	2.375	0.875	328364	328698	328372	—	328378	—	328380	328386	174521	343508
M6 x 1.0	0.236	4	D5	2.500	1.000	328422	328699	328430	—	328436	—	328448	328444	174522	343509
M7 x 1.0	0.276	4	D5	2.719	1.125	330009	—	328497	—	—	—	330072	—	—	—
M8 x 1.0	0.315	4	D5	2.719	1.125	330010	173088	330028	—	173137	—	330073	173199	173221	—
M8 x 1.25	0.315	4	D5	2.719	1.125	328547	328703	328554	—	328550	—	328562	328568	174524	343511
M10 x 1.25	0.394	4	D5	2.938	1.250	330011	173089	330029	—	173138	—	330074	173200	173222	173236
M10 x 1.5	0.394	4	D6	2.938	1.250	328604	328704	328612	—	328618	—	328620	328626	174548	343512
M12 x 1.25	0.472	4	D5	3.375	1.656	330012	173090	330030	—	173139	—	330075	173201	173223	173237
M12 x 1.75	0.472	4	D6	3.375	1.656	328661	328705	328679	—	328675	—	328687	328683	174549	343513
M14 x 1.5	0.551	4	D6	3.594	1.656	330013	173091	330031	—	173140	—	330076	173202	173224	173238
M14 x 2.0	0.551	4	D7	3.594	1.656	328752	328706	328760	—	328707	—	328778	328708	174550	343514
M16 x 1.5	0.630	4	D6	3.813	1.813	330014	—	330032	—	—	—	330077	—	—	—
M16 x 2.0	0.630	4	D7	3.813	1.813	328810	328709	328828	—	328710	—	328836	328711	174551	343515
M18 x 1.5	0.709	4	D6	4.031	1.813	330015	—	330033	—	—	—	173180	—	—	—
M18 x 2.5	0.709	4	D7	4.031	1.813	328877	—	328885	—	—	—	328893	—	174552	—
M20 x 1.5	0.787	4	D6	4.469	2.000	173077	—	330034	—	—	—	330078	—	173225	—
M20 x 2.5	0.787	4	D7	4.469	2.000	328935	—	328943	—	328716	—	328950	328717	174553	—
M24 x 3.0	0.945	4	D8	4.906	2.219	329057	—	329065	—	328719	—	329073	328720	173226	—
M30 x 3.5	1.181	4	D9	5.438	2.563	—	—	329180	—	—	—	173181	—	—	—



**COLORS INDICATES**

**NEW - NOW IN STOCK**

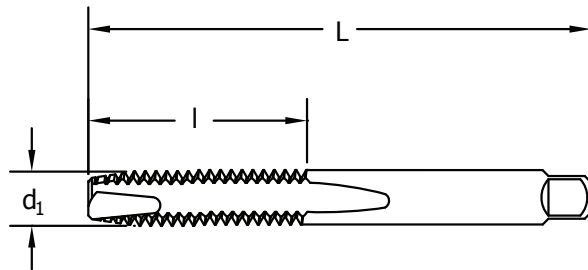
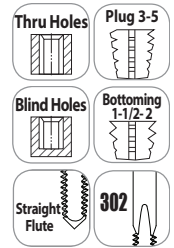
**NEW - COMING SOON**

**New Product Release June, 2023**



**General Purpose Spiral Point - Inch**  
**Style: SPGP**

Effective March 2023: These tap are being converted from 302A to 302 design.



diameter & pitch	thread form	d <sub>1</sub> in	# of flutes	H-limit	L in	l in	order number					
							Bright	Black Oxide	plug TiN	TiCN	bottoming Bright	TiN
0-80	UNF	0.060	2	H1	1.625	0.313	356002	—	—	—	—	—
0-80	UNF	0.060	2	H2	1.625	0.313	356027	330100	356023	330148	356035	—
1-64	UNC	0.073	2	H2	1.688	0.375	356068	—	356061	—	—	—
1-72	UNF	0.073	2	H1	1.688	0.375	356084	—	—	—	—	—
1-72	UNF	0.073	2	H2	1.688	0.375	356102	—	356106	—	—	—
2-56	UNC	0.086	2	H1	1.750	0.438	173000	—	—	—	—	—
2-56	UNC	0.086	2	H2	1.750	0.438	356142	330101	356148	330149	356159	—
2-64	UNF	0.086	2	H2	1.750	0.438	356183	—	—	—	—	—
3-48	UNC	0.099	2	H2	1.813	0.500	356225	—	356221	—	—	—
3-56	UNF	0.099	2	H2	1.813	0.500	356266	—	356262	—	—	—
4-40	UNC	0.112	2	H1	1.875	0.563	356308	—	—	—	—	—
4-40	UNC	0.112	2	H2	1.875	0.563	356324	330102	356320	330150	356332	356338
4-48	UNF	0.112	2	H2	1.875	0.563	356365	—	356361	—	—	—
5-40	UNC	0.125	2	H1	1.938	0.625	173001	—	—	—	—	—
5-40	UNC	0.125	2	H2	1.938	0.625	356407	330103	356403	330151	356415	—
6-32	UNC	0.138	2	H1	2.000	0.688	356421	—	—	—	—	—
6-32	UNC	0.138	2	H2	2.000	0.688	356422	330104	356486	173019	356498	—
6-32	UNC	0.138	2	H3	2.000	0.688	356506	330105	356502	330152	356514	356510
6-32	UNC	0.138	2	H7	2.000	0.688	359005	—	—	—	—	—
6-40	UNF	0.138	2	H2	2.000	0.688	356548	—	356544	—	—	—
8-32	UNC	0.164	2	H1	2.125	0.750	173002	—	—	—	—	—
8-32	UNC	0.164	2	H2	2.125	0.750	356589	330106	356585	173014	173024	—
8-32	UNC	0.164	2	H3	2.125	0.750	356633	330107	356602	330153	356634	356635
8-32	UNC	0.164	2	H7	2.125	0.750	359047	—	330138	—	—	—
8-36	UNF	0.164	2	H2	2.125	0.750	356647	—	330139	—	—	—
10-24	UNC	0.190	2	H1	2.375	0.875	356662	—	—	—	—	—
10-24	UNC	0.190	2	H2	2.375	0.875	356688	—	330140	—	173025	—
10-24	UNC	0.190	2	H3	2.375	0.875	356704	173012	356703	330154	356712	356718
10-24	UNC	0.190	2	H7	2.375	0.875	359088	—	330141	—	—	—
10-32	UNF	0.190	2	H1	2.375	0.875	173003	—	—	—	—	—
10-32	UNF	0.190	2	H2	2.375	0.875	356746	—	356742	—	173026	—
10-32	UNF	0.190	2	H3	2.375	0.875	356761	173013	356767	330155	356779	356775
10-32	UNF	0.190	2	H7	2.375	0.875	359120	—	330142	—	—	—
12-24	UNC	0.216	2	H1	2.375	0.938	173004	—	—	—	—	—
12-24	UNC	0.216	2	H3	2.375	0.938	356803	330108	356809	330156	173027	173050
12-28	UNF	0.216	2	H3	2.375	0.938	356845	—	356841	—	—	—
1/4-20	UNC	0.250	2	H1	2.500	1.000	357009	—	330143	—	—	—
1/4-20	UNC	0.250	2	H2	2.500	1.000	357025	330109	357021	173020	—	—
1/4-20	UNC	0.250	2	H3	2.500	1.000	357041	330110	357047	173021	357058	357054
1/4-20	UNC	0.250	2	H5	2.500	1.000	357066	—	357062	—	—	—

**COLORS INDICATES**

**NEW - NOW IN STOCK**

**NEW - COMING SOON**

**New Product Release June, 2023**

**General Purpose Spiral Point - Inch (Continued)**  
**Style: SGP**

diameter & pitch	thread form	d <sub>1</sub> in	# of flutes	H-limit	L in	l in	order number				bottoming	
							Bright	Black Oxide	plug TiN	TiCN	Bright	TiN
1/4-20	UNC	0.250	2	H11	2.500	1.000	330111	—	—	—	—	—
1/4-20	UNC	0.250	3	H3	2.500	1.000	357082	330112	357088	330157	173029	173051
1/4-20	UNC	0.250	3	H5	2.500	1.000	357108	—	357101	—	—	—
1/4-20	UNC	0.250	2	H13	2.500	1.000	358494	—	358490	—	—	—
1/4-28	UNF	0.250	2	H2	2.500	1.000	330113	—	—	—	—	—
1/4-28	UNF	0.250	2	H3	2.500	1.000	357165	330114	357161	173022	357173	357179
1/4-28	UNF	0.250	3	H2	2.500	1.000	330115	—	—	330158	—	—
5/16-18	UNC	0.313	2	H1	2.719	1.125	357249	—	—	—	—	—
5/16-18	UNC	0.313	2	H2	2.719	1.125	357264	—	330144	—	—	—
5/16-18	UNC	0.313	2	H3	2.719	1.125	357280	330116	357286	173023	357298	173052
5/16-18	UNC	0.313	2	H5	2.719	1.125	357306	—	330145	—	—	—
5/16-18	UNC	0.313	3	H3	2.719	1.125	357322	330117	357328	330159	300016	357294
5/16-18	UNC	0.313	3	H5	2.719	1.125	357348	—	357344	—	—	—
5/16-18	UNC	0.313	3	H13	2.719	1.125	358510	—	—	—	—	—
5/16-24	UNF	0.313	2	H1	2.719	1.125	357363	—	—	—	—	—
5/16-24	UNF	0.313	2	H2	2.719	1.125	173005	—	—	—	—	—
5/16-24	UNF	0.313	2	H3	2.719	1.125	357405	330118	357401	—	357413	—
5/16-24	UNC	0.313	3	H4	2.719	1.125	330119	—	—	330160	—	—
3/8-16	UNC	0.375	3	H2	2.938	1.250	357504	—	330146	—	—	—
3/8-16	UNC	0.375	3	H3	2.938	1.250	357520	330120	357526	330161	173030	173053
3/8-16	UNC	0.375	3	H5	2.938	1.250	357546	—	357542	—	—	—
3/8-24	UNF	0.375	3	H1	2.938	1.250	357561	—	—	—	—	—
3/8-24	UNF	0.375	3	H2	2.938	1.250	357587	—	—	—	—	—
3/8-24	UNF	0.375	3	H3	2.938	1.250	357603	330121	357609	330162	173031	—
3/8-24	UNF	0.375	3	H4	2.938	1.250	357629	—	—	—	—	—
7/16-14	UNC	0.438	3	H2	3.156	1.438	357660	—	—	—	—	—
7/16-14	UNC	0.438	3	H3	3.156	1.438	357686	330122	357682	—	173032	—
7/16-14	UNC	0.438	3	H5	3.156	1.438	357702	—	—	—	—	—
7/16-20	UNF	0.438	3	H3	3.156	1.438	357769	—	357765	330163	173033	—
7/16-20	UNF	0.438	3	H5	3.156	1.438	357785	—	—	—	—	—
1/2-13	UNC	0.500	3	H2	3.375	1.656	357819	—	—	—	—	—
1/2-13	UNC	0.500	3	H3	3.375	1.656	357827	330123	357823	330164	173034	173054
1/2-13	UNC	0.500	3	H5	3.375	1.656	357835	—	357831	—	—	—
1/2-20	UNF	0.500	3	H2	3.375	1.656	173006	—	—	—	—	—
1/2-20	UNF	0.500	3	H3	3.375	1.656	357868	330125	357864	330165	173035	—
1/2-20	UNF	0.500	3	H5	3.375	1.656	173007	—	—	—	—	—
9/16-12	UNC	0.563	3	H3	3.594	1.656	173008	—	—	—	—	—
9/16-12	UNC	0.563	3	H5	3.594	1.656	173009	—	—	—	—	—
9/16-18	UNF	0.563	3	H3	3.594	1.656	173010	—	—	—	—	—
5/8-11	UNC	0.625	3	H3	3.813	1.813	357926	330126	357922	330166	173036	—
5/8-11	UNC	0.625	3	H5	3.813	1.813	357934	—	357930	—	—	—
5/8-18	UNF	0.625	3	H3	3.813	1.813	357942	330128	—	—	—	—
3/4-10	UNC	0.750	3	H3	4.250	2.000	357967	330129	357963	330167	173037	—
3/4-10	UNC	0.750	3	H5	4.250	2.000	357975	—	—	—	—	—
3/4-16	UNF	0.750	3	H3	4.250	2.000	330130	—	—	—	—	—

continued on next page



**COLORS INDICATES**

**NEW - NOW IN STOCK**

**NEW - COMING SOON**

**New Product Release June, 2023**



**General Purpose Spiral Point - Metric**

**Style: SPGP**

diameter & pitch	d <sub>1</sub> in	# of flutes	D- limit	L in	l in	order number			bottoming Bright
						Bright	plug TiN	TiCN	
M1.6 x 0.35	1.60	2	D3	1.625	0.313	360755	173015	—	173038
M1.8 x 0.35	1.80	2	D3	1.688	0.375	330131	—	—	—
M2 x 0.4	2.00	2	D3	1.750	0.438	360771	360774	—	173039
M2.2 x 0.45	2.20	2	D3	1.750	0.438	330132	—	—	—
M2.5 x 0.45	2.50	2	D3	1.813	0.500	360797	173016	—	173040
M3 x 0.5	3.00	2	D3	1.938	0.625	360805	360801	330168	173041
M3.5 x 0.6	3.50	2	D4	2.000	0.688	360821	—	—	—
M4 x 0.7	4.00	2	D4	2.125	0.750	360839	360835	330169	173042
M4.5 x 0.75	4.50	2	D4	2.375	0.875	360854	—	—	—
M5 x 0.8	5.00	2	D4	2.375	0.875	360862	360868	330170	173043
M6 x 1.0	6.00	2	D5	2.500	1.000	360888	360884	330171	173044
M7 x 1.0	7.00	2	D5	2.719	1.125	360904	—	—	—
M8 x 1.0	8.00	2	D5	2.719	1.125	330133	173017	—	173045
M8 x 1.25	8.00	2	D5	2.719	1.125	360920	360926	330172	173046
M10 x 1.25	10.00	3	D5	2.938	1.250	330134	173018	—	173047
M10 x 1.5	10.00	3	D6	2.938	1.250	360946	360942	330173	173048
M12 x 1.25	12.00	3	D5	3.375	1.656	330135	330147	—	—
M12 x 1.75	12.00	3	D6	3.375	1.656	360961	360967	330174	173049
M14 x 1.5	14.00	3	D6	3.594	1.656	330136	—	—	—
M14 x 2	14.00	3	D7	3.594	1.656	360995	—	—	—
M16 x 1.5	16.00	3	D6	3.813	1.813	330137	—	—	—
M16 x 2	16.00	3	D7	3.813	1.813	361019	—	—	—
M18 x 2.5	18.00	3	D7	4.031	1.813	173011	—	—	—
M20 x 2.5	20.00	3	D7	4.469	2.000	361050	—	—	—





# C NEW SIZES

## CLE-LINE®

### COLORS INDICATES

Yellow Shading indicates  
NEW - NOW IN STOCK

Blue Shading indicates  
NEW - COMING SOON



### Silver & Deming - 1/2" Reduced Shank

Styles: 1680, 1681, 1813, 1892, 1877



#### Note

Style 1892:  
\*Sizes shorter than 1-1/4"  
are 118° point.  
\*Sizes 1-1/4" and larger  
are 118° Split Point.  
1/2" reduced shank.

<b>Black Oxide</b>	118°	Reduced Shank
	#1680 #1681 #1813 #1892*	#1680 #1813
<b>HSS</b>	118° Split	Reduced Flatted Shank
<b>Black Gold</b>	#1892* #1877	#1681 #1892 #1877

drill diameter fractional	mm	decimal equivalent	overall length	flute length	order number				
					1680 Round Shank Black Oxide	1681 (3)Flatted Shank Black Oxide	1813 Round Shank Black Oxide	1892 (3)Flatted Shank Black Oxide	1877 (3)Flatted Shank Black & Gold
1/2		.5000	6	3-1/8	C68631	C68674	C20732	C20670	C27600
	13.0	.5118	152	79	—	—	C21070	—	C21170
33/64		.5156	6	3-1/8	C68632	C68675	C20733	C20671	C17031
	17/32	.5312	6	3-1/8	C68633	C68676	C20734	C20672	C17032
35/64		.5315	152	79	—	—	C21071	—	C21171
	14.0	.5469	6	3-1/8	C68634	C68677	C20735	C20673	C17033
9/16		.5512	152	79	—	—	C21072	—	C21172
	14.5	.5625	6	3-1/8	C68635	C68678	C20736	C20674	C17034
37/64		.5709	152	79	—	—	C21073	—	C21173
	15.0	.5781	6	3-1/8	C68636	C68679	C20737	C20675	C17035
19/32		.5906	152	79	—	—	C21074	—	C21174
	39/64	.5938	6	3-1/8	C68637	C68680	C20738	C20676	C17036
5/8		.6094	6	3-1/8	C68638	C68681	C20739	C20677	C17037
	15.5	.6102	152	79	—	—	C21075	—	C21175
41/64		.6250	6	3-1/8	C68639	C68682	C20740	C20678	C17038
	16.0	.6299	152	79	—	—	C21076	—	C21176
21/32		.6406	6	3-1/8	C68640	C68683	C20741	C20679	C17039
	16.5	.6496	152	79	—	—	C21077	—	C21177
43/64		.6562	6	3-1/8	C68641	C68684	C20742	C20680	C17040
	17.0	.6693	152	79	—	—	C21078	—	C21178
11/16		.6719	6	3-1/8	C68642	C68685	C20743	C20681	C17041
	17.5	.6875	6	3-1/8	C68643	C68686	C20744	C20682	C17042
45/64		.6890	152	79	—	—	C21079	—	C21179
	18.0	.7031	6	3-1/8	C68644	C68687	C20745	C20683	C17043
23/32		.7087	152	79	—	—	C21080	—	C21180
	18.5	.7188	6	3-1/8	C68645	C68688	C20746	C20684	C17044
47/64		.7283	152	79	—	—	C21081	—	C21181
	19.0	.7344	6	3-1/8	C68646	C68689	C20747	C20685	C17045
3/4		.7480	152	79	—	—	C21082	—	C21182
		.7500	6	3-1/8	C68647	C68690	C20748	C20686	C17046

continued on next page



**COLORS INDICATES**

**NEW - NOW IN STOCK**

**NEW - COMING SOON**

**New Product Release June, 2023**



**Silver & Deming - 1/2" Reduced Shank (Continued)**

**Styles: 1680, 1681, 1813, 1892, 1877**

order number

drill diameter fractional	mm	decimal equivalent	overall length	flute length	1680 Round Shank Black Oxide	1681 (3)Flatted Shank Black Oxide	1813 Round Shank Black Oxide	1892 (3)Flatted Shank Black Oxide	1877 (3)Flatted Shank Black & Gold
49/64		.7656	6	3-1/8	C68648	C68691	C20749	C20687	C17047
	19.5	.7677	152	79	—	—	C21083	—	C21183
25/32		.7812	6	3-1/8	C68649	C68692	C20750	C20688	C17048
	20.0	.7874	152	79	—	—	C21084	—	C21184
51/64		.7969	6	3-1/8	C68650	C68693	C20669	C28415	C17049
13/16		.8125	6	3-1/8	C68651	C68694	C20751	C20689	C17050
	21.0	.8268	152	79	—	—	C21085	—	C21185
53/64		.8281	6	3-1/8	C68652	C68695	C20724	C28416	C17051
27/32		.8438	6	3-1/8	C68653	C68696	C20752	C20690	C17052
55/64		.8594	6	3-1/8	C68654	C68697	C20725	C28417	C17053
	22.0	.8661	152	79	—	—	C21086	—	C21186
7/8		.8750	6	3-1/8	C68655	C68698	C20753	C20691	C17054
57/64		.8906	6	3-1/8	C68656	C68699	C20726	C28418	C17055
	23.0	.9055	152	79	—	—	C21087	—	C21187
29/32		.9062	6	3-1/8	C68657	C68700	C20754	C20692	C17056
59/64		.9219	6	3-1/8	C68658	C68701	C20727	C28419	C17057
15/16		.9375	6	3-1/8	C68659	C68702	C20755	C20693	C17058
	24.0	.9449	152	79	—	—	C21088	—	C21188
61/64		.9531	6	3-1/8	C68660	C68703	C20728	C28420	C17059
31/32		.9688	6	3-1/8	C68661	C68704	C20756	C20694	C17060
	25.0	.9843	152	79	—	—	C21089	—	C21189
63/64		.9844	6	3-1/8	C68662	C68705	C20729	C28421	C17061
1		1.0000	6	3-1/8	C68663	C68706	C20757	C20695	C17062
1-1/64		1.0156	6	3-1/8	—	C68707	C27100	C28422	C27601
1-1/32		1.0312	6	3-1/8	C68664	C68708	C20730	C28423	C27602
1-3/64		1.0469	6	3-1/8	—	C68709	C27101	C28424	C27603
1-1/16		1.0625	6	3-1/8	C68665	C68710	C20758	C20696	C17066
1-5/64		1.0781	6	3-1/8	—	C68711	C27102	C28425	C27604
1-3/32		1.0938	6	3-1/8	—	C68712	C27103	C28426	C27605
1-7/64		1.1094	6	3-1/8	—	C68713	C27104	C28427	C27606
1-1/8		1.1250	6	3-1/8	C68666	C68714	C20759	C20697	C17070
1-9/64		1.1406	6	3-1/8	—	C68715	C27105	C28428	C27607
1-5/32		1.1562	6	3-1/8	C68667	C68716	C20731	C28429	C27608
1-11/64		1.1719	6	3-1/8	—	C68717	C27106	C28430	C27609
1-3/16		1.1875	6	3-1/8	C68668	C68718	C20760	C20698	C17074
1-13/64		1.2031	6	3-1/8	—	C68719	C27107	C28431	C27610
1-7/32		1.2188	6	3-1/8	—	C68720	C27108	C28432	C27611
1-15/64		1.2344	6	3-1/8	—	C68721	C27109	C28433	C27612
*1-1/4		1.2500	6	3-1/8	C68669	C68722	C20761	C20699	C17078
*1-17/64		1.2656	6	3-1/8	—	C68723	C27110	C28434	C27613
*1-9/32		1.2812	6	3-1/8	—	C68724	C27111	C28435	C27614
*1-19/64		1.2969	6	3-1/8	—	C68725	C27112	C28436	C27615
*1-5/16		1.3125	6	3-1/8	C68670	C68726	C20762	C28437	C17082
*1-21/64		1.3281	6	3-1/8	—	C68727	C27113	C28438	C27616
*1-11/32		1.3438	6	3-1/8	—	C68728	C27114	C28439	C27617
*1-23/64		1.3594	6	3-1/8	—	C68729	C27115	C28440	C27618
*1-3/8		1.3750	6	3-1/8	C68671	C68730	C20763	C28441	C17086
*1-25/64		1.3906	6	3-1/8	—	C68731	C27116	C28442	C27619
*1-13/32		1.4062	6	3-1/8	—	C68732	C27117	C28443	C27620
*1-27/64		1.4219	6	3-1/8	—	C68733	C27118	C28444	C27621
*1-7/16		1.4375	6	3-1/8	C68672	C68734	C20764	C28445	C17090
*1-29/64		1.4531	6	3-1/8	—	C68735	C27119	C28446	C27622
*1-15/32		1.4843	6	3-1/8	—	—	C27120	C28447	C27623
*1-31/64		1.4844	6	3-1/8	—	C68736	C27121	C28448	C27624
*1-1/2		1.5000	6	3-1/8	C68673	C68737	C20765	C28449	C17094



**COLORS INDICATES**

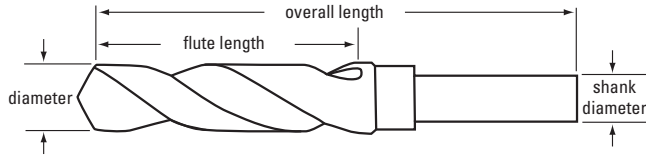
**NEW - NOW IN STOCK**

**NEW - COMING SOON**

**New Product Release June, 2023**



**Silver & Deming - 1/4" Reduced Shank**  
**Styles: 1814**



Drill Diameter		Shank Diameter Inch	Overall Length Inch	Flute Length Inch	Order Number
Fraction	Decimal				Black Oxide
1/4	.2500	.2500	2.5000	1.3750	C20150
5/16	.3125	.2500	2.8125	1.3750	C20151
3/8	.3750	.2500	3.1250	1.6875	C20152
7/16	.4375	.2500	3.4375	2.0000	C20153
1/2	.5000	.2500	3.7500	2.2500	C20154

Number of Tools	Size Range	Case	Order Number
5	1/4 - 1/2 x 1/16	metal	C20155

